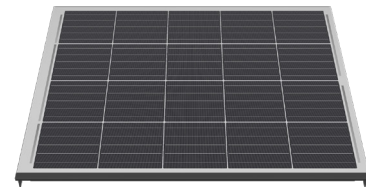
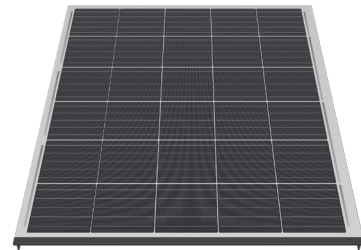


Border solar modules for M330-60-w GG NICER 3

0322.1426 Swiss Premium M220-4x10-w GG NICER 3

Nominal power (Pmpp)	220 Wp
Nominal voltage (Umpp)	22.7 V
Nominal current (Impp)	9.69 A
Open circuit voltage (Uoc)	27.0 V
Short circuit current (Isc)	10.74 A
Number of cells (matrix)	40 (4x 10)
Dimensions (LxWxH) ± 3.0 mm	725 x 1671 x 60 mm
Modular dimensions (LxW)	696 x 1676 mm
Weight	25 kg

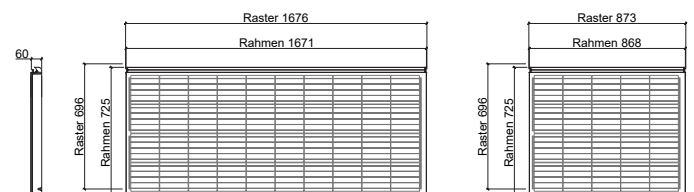
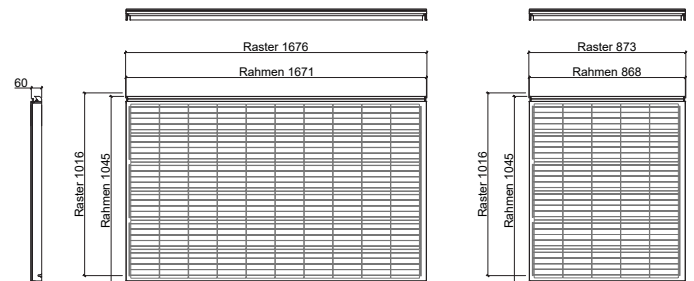


0322.1427 Swiss Premium M165-6x5-w GG NICER 3

Nominal power (Pmpp)	165 Wp
Nominal voltage (Umpp)	17.1 V
Nominal current (Impp)	9.69 A
Open circuit voltage (Uoc)	20.2 V
Short circuit current (Isc)	10.74 A
Number of cells (matrix)	30 (6x 5)
Dimensions (LxWxH) ± 3.0 mm	1045 x 868 x 60 mm
Modular dimensions (LxW)	1016 x 873 mm
Weight	20 kg

0322.1428 Swiss Premium M110-4x5-w GG NICER 3

Nominal power (Pmpp)	110 Wp
Nominal voltage (Umpp)	11.4 V
Nominal current (Impp)	9.69 A
Open circuit voltage (Uoc)	13.5 V
Short circuit current (Isc)	10.74 A
Number of cells (matrix)	20 (4x 5)
Dimensions (LxWxH) ± 3.0 mm	725 x 868 x 60 mm
Modular dimensions (LxW)	696 x 873 mm
Weight	14 kg



Customized special modules

3338.0991 Special module NICER 2/3 Cat. 1	active / complexity: low
3338.0992 Special module NICER 2/3 Cat. 2	active / complexity: medium
3338.0993 Special module NICER 2/3 Cat. 3	active / complexity: high
3338.0994 Special module NICER 2/3 Cat. 4	passive / complexity: high

Border modules are electrically compatible with the corresponding basic module (60 solar cells). For technical reasons of production, despite utmost care, the surface properties and optical colour effect may vary from the basic module.

STC (Standard Test Conditions): irradiance 1000 W/m², cell temperature 25°C, AM 1.5
Measuring tolerances ± 3 % (Pmpp); ± 10 % (Umpp, Impp, Uoc, Isc)



Note: The instructions in the installation manual must be strictly complied with. Further information about approved utilization of products can be found in the installation manual or can be requested from the technical service.

E-mail: info@megasol.ch
Hotline: +41 62 919 90 90
www.megasol.ch



Megasol partner

Subject to errors and technical modifications.
© Megasol Energy Ltd | Version: 12/2019