



Premium Energy
Storage System

Energy Storage System

From Modular Pack to Turnkey Solution

UZENERGY



UZ ENERGY

Premium Energy Storage System

Who We Are

UZ ENERGY LIMITED was founded in 2013, with head quarter in Shenzhen, China. UZ Energy is an innovative energy storage solution enterprise with global impact. With a comprehensive portfolio of products, solutions and services, UZ Energy promises the optimized performance, reliability and return on investment of energy storage installation, from residential-scale facility to grid-scale power plants.

We leads by innovation at the basis of professional research coming with an professional R&D team, to provide products designed, tested and manufactured according to the highest global standards. We have established long-term strategic cooperation with the best-in-class battery manufactures and professionals with skillsets and expertise in Science Engineering and Technology to develop products with global relevance.

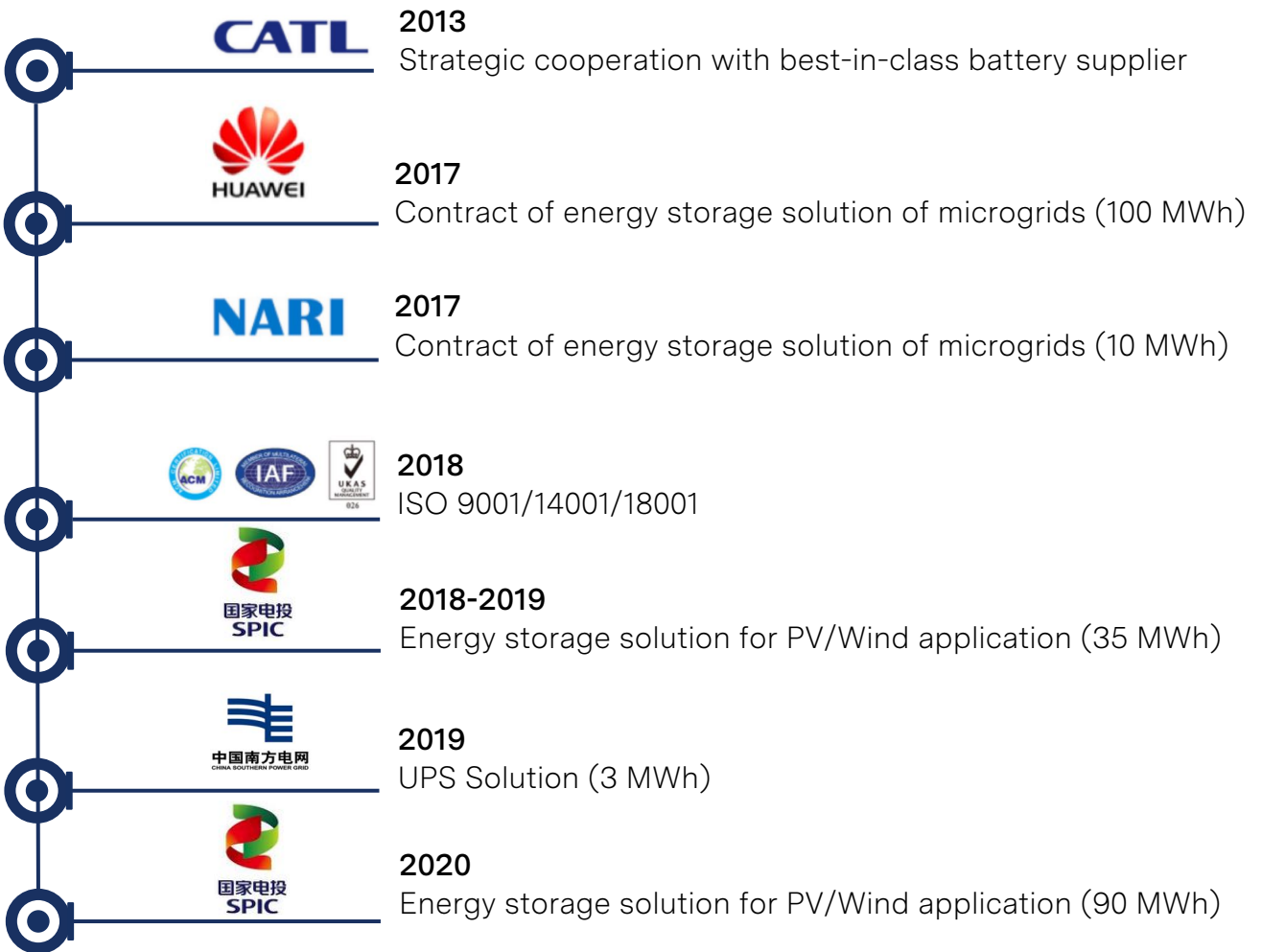
Our commitment is becoming leading facilitator in the global shift towards future energy storage. With a mission to accelerate the world's transition to sustainable energy. We commercially advance and deploy clean energy technologies, promoting sustainability in developing projects that deliver innovation to move the world forward.

With years of combined experience in providing clean energy solutions, and having partnered with the world's clean energy companies, UZ Energy is uniquely positioned to guide your complex projects from inception to implementation.



MILESTONES

BUILDING BLOCKS TOWARDS A GREAT FUTURE



General Installation ¹Standing Installation ²

SPECIFICATION (Supporting multiple-parallel mode up to 16 sets)

Model	Power Lite Series
Battery Type	LiFePO4
Nominal Battery Energy	5.12 kWh
Nominal Capacity	100 Ah
Nominal Voltage	51.2 V
Working Voltage Range	48-57.6 V
Nominal Current (Recommended)	50 A (0.5 C)
Max Continuous Discharging Current (Cell)	100 A (1 C)
Net Weight	43 kg
Dimension [W*D*H]	440*530*132 mm
Working Temp. Range	0-50 deg C
Designed Life-span	6000 Cycles ³
Protection Level	IP20
Communication	CAN/RS485/RS232/Dry Contact
Certificate	TUV/IEC 62619/CE-IEC 61000 IEC 62040/UN38.3
Calendar Life	10 Years ³

¹: L051100-A can be installed by using F series Rack or Fast Installation Component

²: L051100-A can be installed by using Standing Installation Component

³: Working Condition 0.5 C @ 25 deg C, 80% DoD, 1 cycle per day

Powered by **CATL**



HV Battery Pack

HV System (Single Cluster)

HV System (Clusters in Parallel)

SPECIFICATION

Model		Power Swift Series	
Battery Type	LiFePO4		
Nominal Battery Energy	25-50 kWh		
Nominal Capacity	100 Ah		
Nominal Voltage/Pack	51.2 V		
Working Voltage Range	25 kWh 240-288 V	40 kWh 384-460 V	
	30 kWh 288-345 V	45 kWh 432-518 V	
	35 kWh 336-403 V	50 kWh 480-576 V	
Nominal Current (Recommended)	50 A (0.5 C)		
Max Continuous Discharging Current (Cell)	100 A (1 C)		
Net Weight	Approx. 255-345 kg	Approx. 390-480 kg	
Dimension [W*D*H]	550*580*1400 mm	550*580*1800 mm	
Working Temp. Range	0-50 deg C		
Designed Life-span	6000 Cycles ¹		
Protection Level	IP20		
Communication	CAN/RS485/RS232/ETH/Dry Contact		
Certificate (Cell Level)	TUV/IEC 62619/CE-IEC 61000/UN38.3		
Calendar Life	10 Years ¹		

¹: Working Condition 0.5 C @ 25 deg C, 80% DoD, 1 cycle per day.

Powered by **CATL**



Power Lite Plus



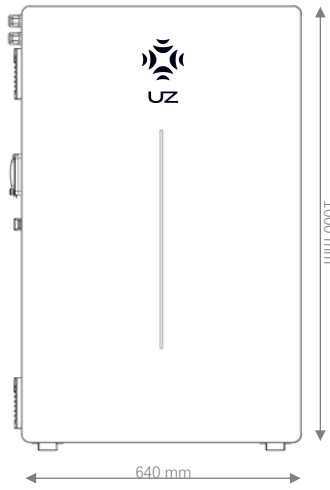
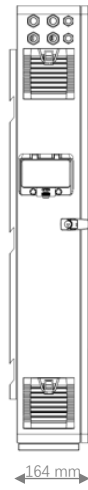
Wherever you find
your energy.
Shine on.

- ✓ LFP Most Safe Battery Technology
- ✓ High Energy Density Design
- ✓ Indoor/Outdoor Compatible
- ✓ Plug & Play (w/ approved DC isolator)
- ✓ Slim-Steady Design
- ✓ Compatible with various inverter brands

To enable every household and business to be entirely powered by premium renewable energy all time,.



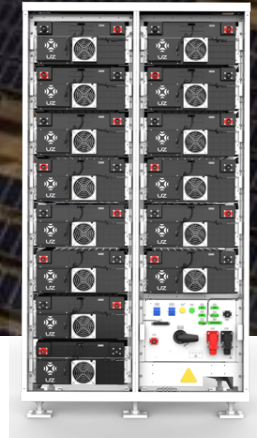
Powered by **CATL**



SPECIFICATION

Battery Enclosure	xxxx
Battery Type	LiFePO4
Number of Battery Units	1 or 2 sets of Power Lite (L051100-A)
Nominal Battery Energy	Up to 10.24 kWh (2 sets of 5.12 kWh L051100-A)
Nominal Voltage	51.2 V
Working Voltage Range	48-57.6 V
Nominal Current (Recommended)	50 A (0.5 C)
Cable Specification	
Battery Cable Rating	100 A, each cable
Battery Cable Type	25 mm ²
General Data	
Dimension [W*D*H]	640*164*1000 mm
Mounting and Weight- Empty	Approx. 25 Kg rear fixing
Mounting and Weight- w/ Battery	Approx. 70 kg, 1 set of Power Lite inside Approx. 115 kg, 2 sets of Power Lite inside
Working Temp. Range	Based on battery (Power Lite Series) Specification
Protection Level	IP54
Communication	CAN/RS485/RS232/Dry Contact
Certificate (Battery, Power Lite Inside)	TUV/IEC 62619/CE-IEC 61000 IEC 62040/UN38.3
Calendar Life	10 Years ³
Construction	Powder coated steel chassis
Finish	Sealed, powder coated front covers and chassis
Supply	Ships pre-assembled (excluding batteries)

1: Working Condition 0.5 C @ 25 deg C, 80% DoD, 1 cycle per day



SPECIFICATION

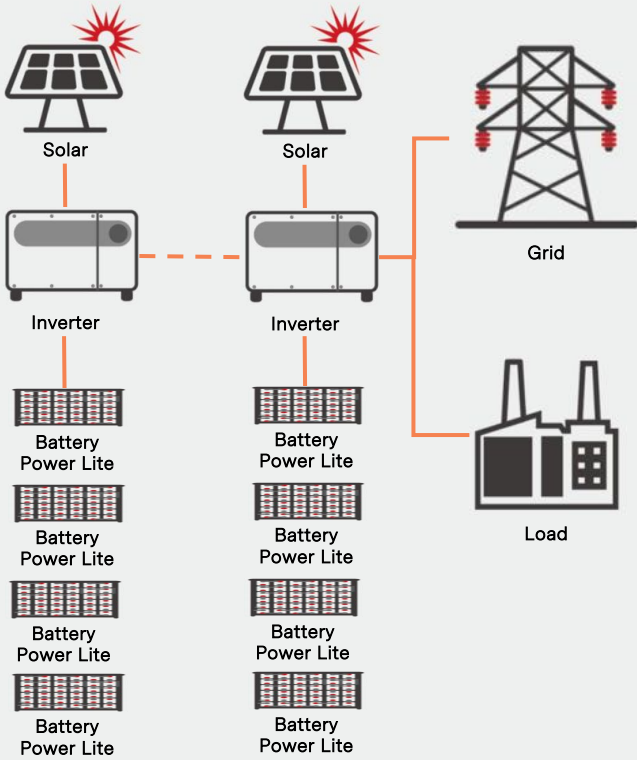
Model	Power Mega Series	
Battery Type	LiFePO4	
Nominal Battery Energy	125-304 kWh	
Nominal Capacity	280 Ah	
Nominal Voltage/Pack	64 V	
Working Voltage Range	125 kWh 392-504 V	232 kWh 728-936 V
	143 kWh 448-576 V	250 kWh 784-1008 V
	161 kWh 504-648 V	268 kWh 840-1080 V
	179 kWh 560-720 V	286 kWh 896-1152 V
	196 kWh 616-792 V	304 kWh 952-1224 V
	214 kWh 672-864 V	
Nominal Current	140 Ah (0.5 C)/280 Ah (1 C)	
Max Continuous Current	280 A (1 C)	
Net Weight	Approx. 1030-1730 kg	Approx. 1870-2430 kg
Dimension [W*D*H]	2300*1200*1000 mm	
Working Temp. Range	0-50 deg C	
Designed Life-span	8000 Cycles ¹	
Protection Level	IP20	
Communication	CAN/RS485/RS232/ETH/Dry Contact	
Certificate	TUV/IEC 62619/CE-IEC 61000/IEC 62477 UL 1973/UL 9540A/UN38.3	
Calendar Life	15 Years ¹	

¹: Working Condition 0.5 C @ 25 deg C, 80% DoD, 1 cycle per day.

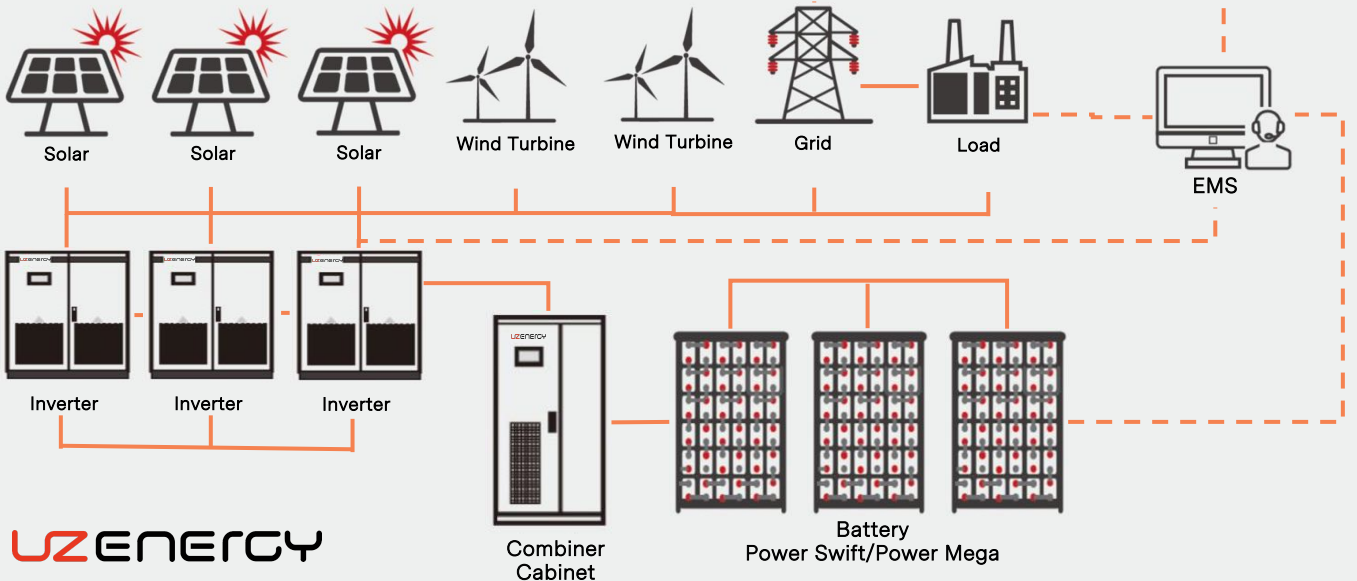
Powered by **CATL**



RESIDENTIAL ESS



COMMERCIAL & INDUSTRIAL ESS





**Wherever you
find your energy.
Shine on.**