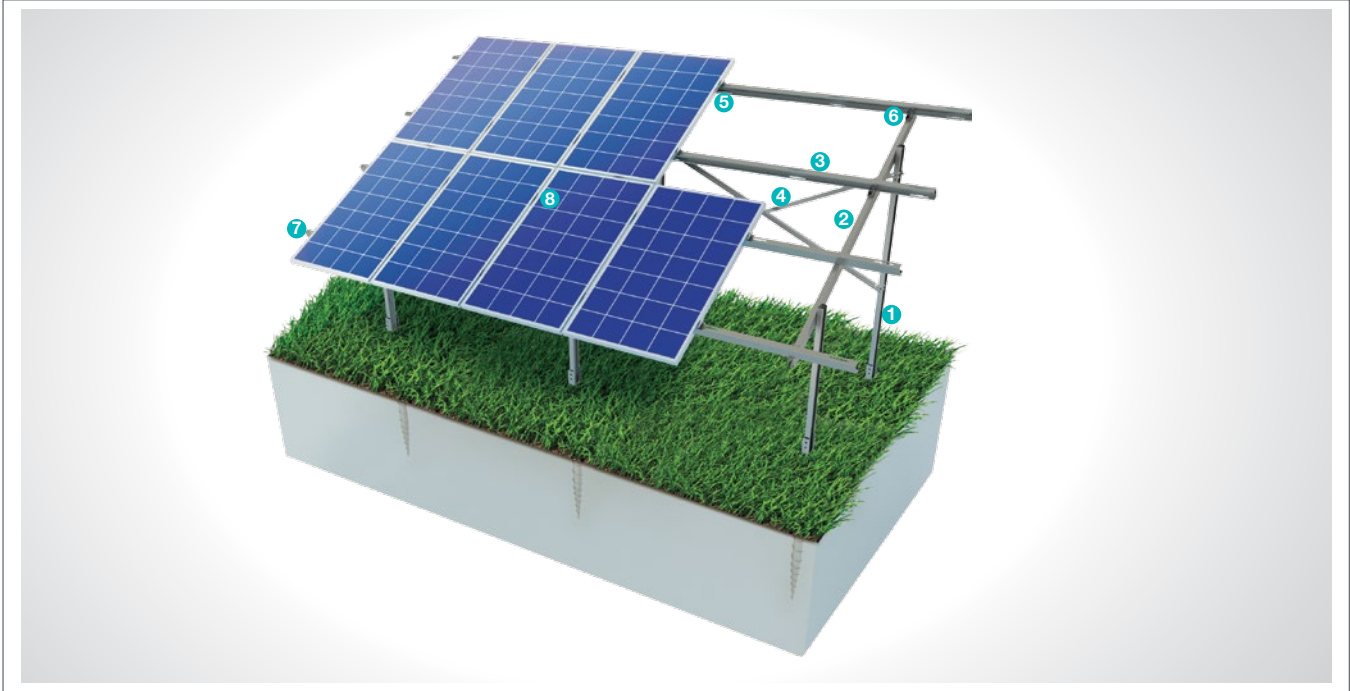


(KPT3) Ground Screwed Steel Mounting System with 2 Vertical Panels

Overview

KPT3, is a steel support and mounting system for open terrain solar panels with 2 vertical panels installed to the ground with screw piles. The system is an optimal application solution for installations of PV projects on irregular terrains . The screw piles have high strength properties and can be used any time of the year for application purposes. They are not affected by vibrations generated by ambient conditions such as wind or storm due to their high load strength. After manufacturing the system components with high-technology machines and equipment, an excellent corrosion resistance is then achieved through hot-dip galvanized coating. The system, incorporating a high-level engineering design, provides assembly and cost advantages.

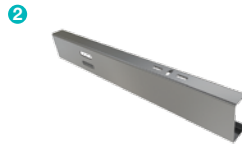


STEEL COLUMN



- **CK-90 / CK-100 / CK-120**
M12X30 Knurled Bolt
M12 Flanged Nut
M12 Washer
M12X140 Knurled Bolt

STEEL BEAM



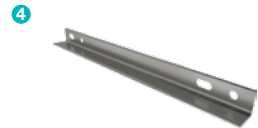
- **CR-100 / CR-120**
M12X30 Knurled Bolt
M12 Flanged Nut
M8X30 Knurled Bolt
M8 Flanged Nut
M8/M12 Washer

STEEL PURLIN



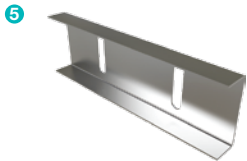
- **CA-90 / CA-100 / CA-110**
M12X30 Knurled Bolt
M12 Flanged Nut
M8X30 Knurled Bolt
M8 Flanged Nut
M8/M12 Washer

STEEL L BRACKET



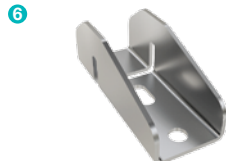
- **CL-40X40 / CL-50X50**
M12X30 Knurled Bolt
M12 Flanged Nut
M12 Washer

PURLIN CONNECTOR JOINING PIECE



- **C-90 / C-100 / C-110**
M12X30 Knurled Bolt
M12 Flanged Nut
M12 Washer

PURLIN CONNECTOR PIECE



- **U40**
M8X30 Knurled Bolt
M8 Flanged Nut
M8 Washer

PANEL SIDE RETAINER



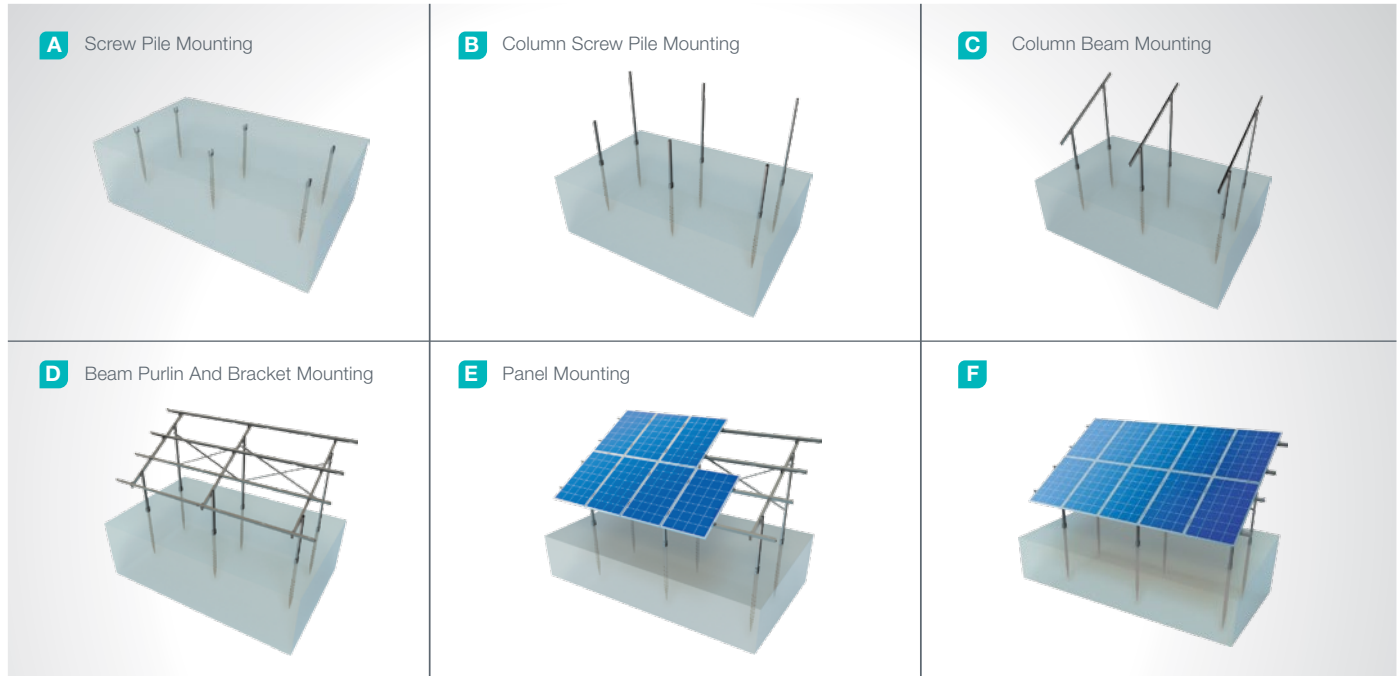
- **H30-H32-H40**
M8X30 Hex Bolt
M8 Flanged Nut

PANEL CENTER RETAINER



- **L70**
M8X30 Hex Bolt
M8 Flanged Nut

Installation Phase



Advantages

- Time saving for installation
- Cost saving for installation
- Flexible solutions for different types of terrains
- Screw Piles do not require preliminary drilling and concrete
- All year round mounting capability
- Assembly can be commenced immediately
- After screw pile mounting on ground
- Re-use opportunity in some cases
- Screw pile vibration damping
- Tailored design solutions for customer
- Customer oriented engineering solutions

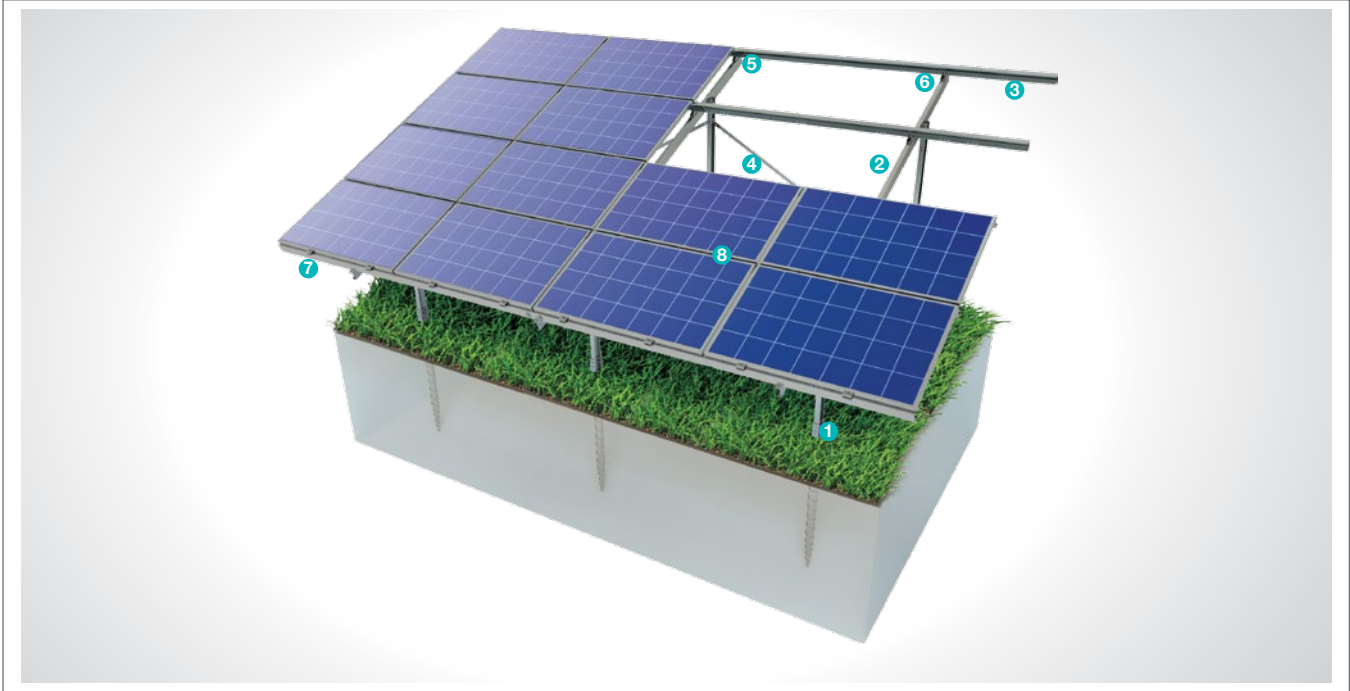
Technical Specifications

Description:	(KPT3) Ground Screwed Steel Mounting System with 2 Vertical Panels
Mounting Method:	Ground Screwing
Tilt Angle:	0-60 degrees
Module Application:	Framed and Unframed
Panel Height From Ground:	60 cm
Column and Beam Coating:	EN ISO 1461
Column and Beam Material:	EN 10025 / EN 10029
Optional Beam Material:	EN 10346
Panel Retainer:	EN AW 6063
Connector Equipment:	DIN 934 / DIN933 / DIN 912, A2-70 DIN 50979

(KPT4) Ground Screwed Steel Mounting System with 4 Horizontal Panels

Overview

KPT4, s a ground driven steel support and mounting system with 4 horizontal panels for open terrain solar panels. The system is an optimal application solution for installations of PV projects on irregular terrains . The screw piles have high strength properties and can be used any time of the year for application purposes. They are not affected by vibrations generated by ambient conditions such as wind or storm due to their high load strength. After manufacturing the system components with high-technology machines and equipment, an excellent corrosion resistance is then achieved through hot-dip galvanized coating. The system, incorporating a high-level engineering design, provides assembly and cost advantages.



STEEL COLUMN

1



- **CK-90 / CK-100 / CK-120**
M12X30 Knurled Bolt
M12 Flanged Nut
M12 Washer
M12X140 Knurled Bolt

STEEL BEAM

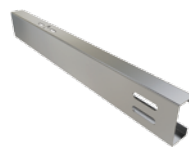
2



- **CR-100 / CR-120**
M12X30 Knurled Bolt
M12 Flanged Nut
M8X30 Knurled Bolt
M8 Flanged Nut
M8/M12 Washer

STEEL PURLIN

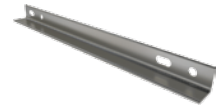
3



- **CA-90 / CA-100 / CA-110**
M12X30 Knurled Bolt
M12 Flanged Nut
M8X30 Knurled Bolt
M8 Flanged Nut
M8/M12 Washer

STEEL L BRACKET

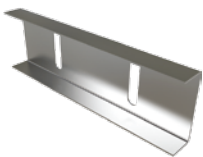
4



- **CL-40X40 / CL-50X50**
M12X30 Knurled Bolt
M12 Flanged Nut
M12 Washer

PURLIN CONNECTOR JOINING PIECE

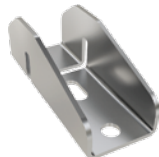
5



- **C-90 / C-100 / C-110**
M12X30 Knurled Bolt
M12 Flanged Nut
M12 Washer

PURLIN CONNECTOR PIECE

6



- **U40**
M8X30 Knurled Bolt
M8 Flanged Nut
M8 Washer

PANEL SIDE RETAINER

7



- **H30-H32-H40**
M8X30 Hex Bolt
M8 Flanged Nut

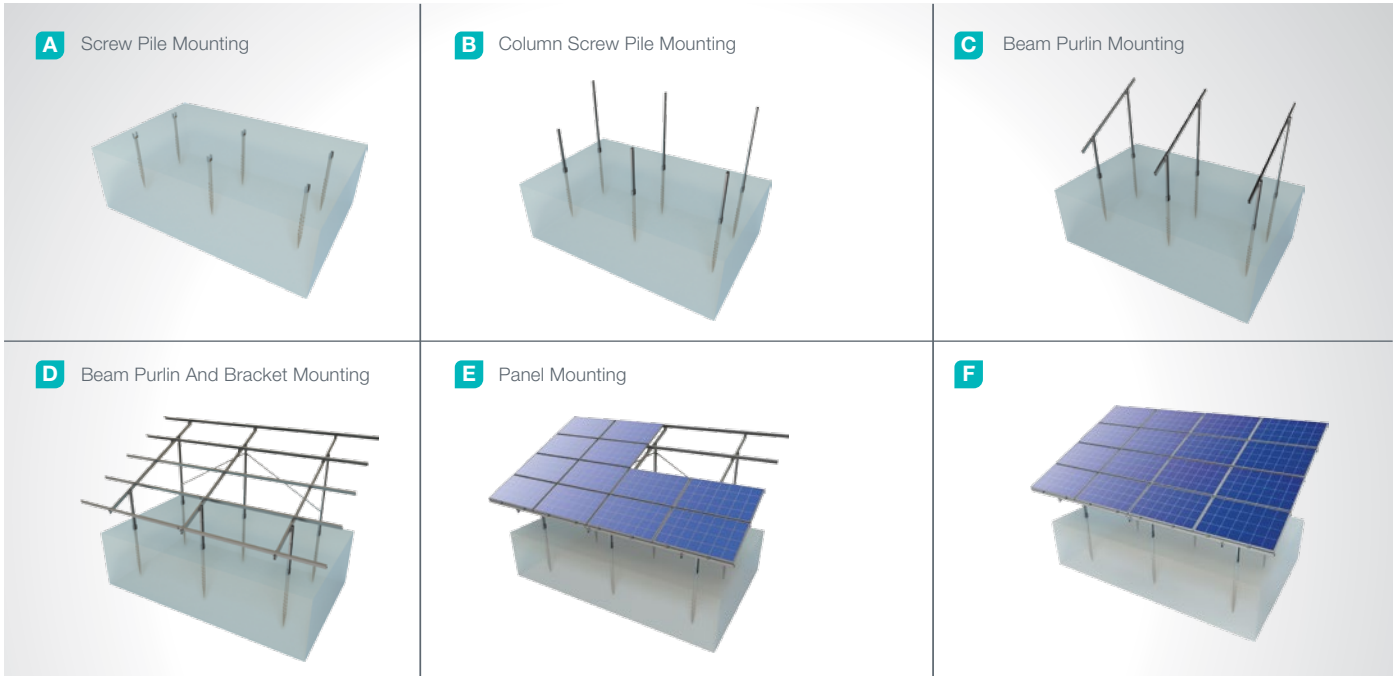
PANEL CENTER RETAINER

8



- **L70**
M8X30 Hex Bolt
M8 Flanged Nut

Installation Phase



Advantages

- Time saving for installation
- Cost saving for installation
- Flexible solutions for different types of terrains
- Screw Piles do not require preliminary drilling and concrete
- All year round mounting capability
- Assembly can be commenced immediately
- After screw pile mounting on ground
- Re-use opportunity in some cases
- Screw pile vibration damping
- Tailored design solutions for customer
- Customer oriented engineering solutions

Technical Specifications

Description:	KPT4) Ground Screwed Steel Mounting System with 4 Horizontal Panels
Mounting Method:	Ground Screwing
Tilt Angle:	0-60 degrees
Module Application:	Framed and Unframed
Panel Height From Ground:	60 cm
Column and Beam Coating:	EN ISO 1461
Column and Beam Material:	EN 10025 / EN 10029
Optional Beam Material:	EN 10346
Panel Retainer:	EN AW 6063
Connector Equipment:	DIN 934 / DIN933 / DIN 912, A2-70 DIN 50979