

## (KPT15) Concrete Base Anchored Steel Car Park Mounting System with 2 Vertical Panels

### Overview

KPT15, is a concrete base anchored steel support and mounting system with 2 vertical panels for car park solar panels. The system is an optimal application solution for installations of PV projects in car parks. It provides strength and stability in car parks. After manufacturing the system components with high-technology machines and equipment, an excellent corrosion resistance is then achieved through hot-dip galvanized coating. The system, incorporating a high-level engineering design, provides assembly and cost advantages.



#### STEEL ANCHORAGE PIECE

1



- **CAP**  
M16X150 Knurled Bolt  
M16/M12 Flanged Nut  
M16/M12 Washer  
M12X30 Knurled Bolt

#### STEEL NPI COLUMN

2



- **NPI-200 x 90 x 7,5**  
M12X30 Knurled Bolt  
M12 Flanged Nut  
M8X30 Knurled Bolt  
M8 Flanged Nut  
M8/M12 Washer

#### STEEL BEAM

3



- **CR-150**  
M12X30 Knurled Bolt  
M12 Flanged Nut  
M8X30 Knurled Bolt  
M8 Flanged Nut  
M8/M12 Washer

#### STEEL PURLIN

4



- **CA-100 / CA-110**  
M12X30 Knurled Bolt  
M12 Flanged Nut  
M8X30 Knurled Bolt  
M8 Flanged Nut  
M8/M12 Washer

#### STEEL PURLIN CONNECTION PIECE

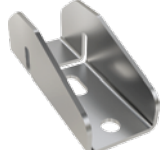
5



- **C-90 / C-100 / C-110**  
M12X30 Knurled Bolt  
M12 Flanged Nut  
M12 Washer

#### PURLIN CONNECTOR

6



- **U40**  
M8X30 Knurled Bolt  
M8 Flanged Nut  
M8 Washer

#### PANEL SIDE RETAINER

7



- **H30-H32-H40**  
M8X30 Hex Bolt  
M8 Flanged Nut

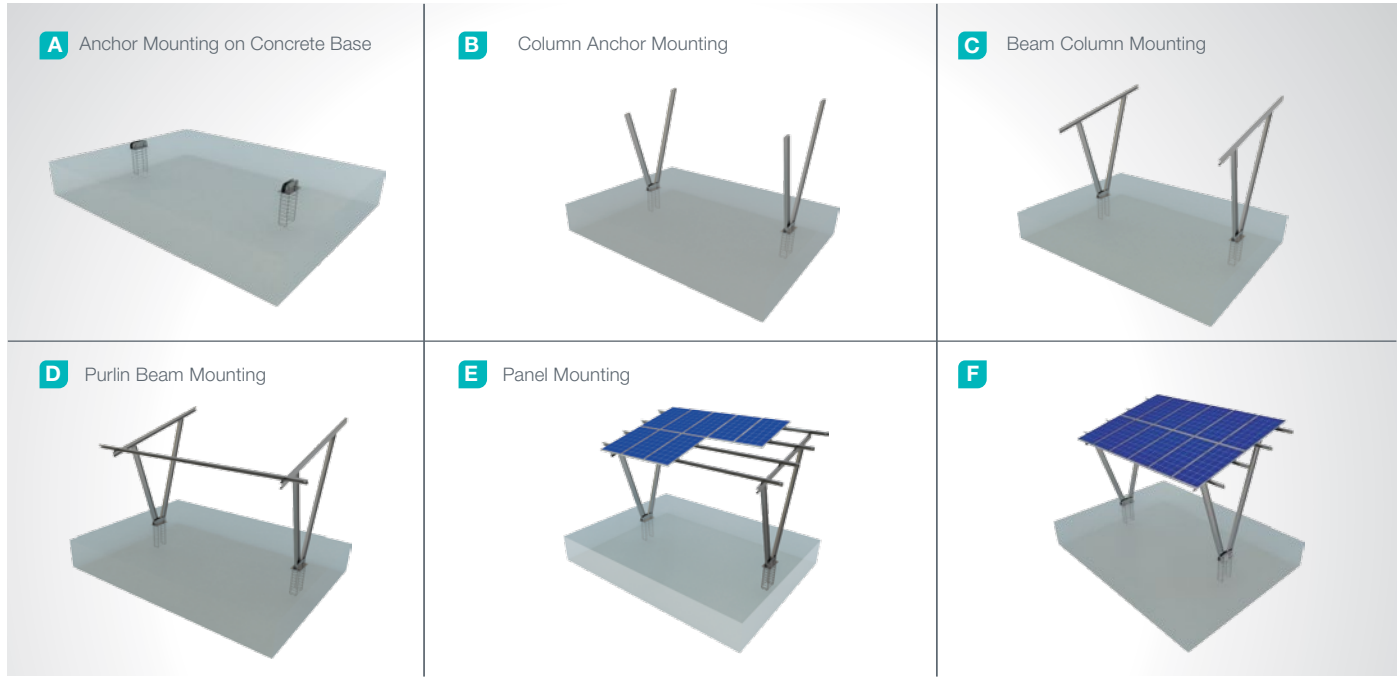
#### PANEL CENTER RETAINER

8



- **L70**  
M8X30 Hex Bolt  
M8 Flanged Nut

## Installation Phase



## Advantages

- Time saving for installation
- Cost saving for installation
- Suitable for all kinds of car parks
- Protection against sun, rain and snow
- Flexible look
- Suitable for continuous expansion
- Tailored design solutions for customer
- Customer oriented engineering solutions

## Technical Specifications

Explanation:	(KPT15) Concrete Base Anchored Steel Car Park Mounting System with 2 Vertical Panels
Assembly Method:	Anchor on Concrete Base
Tilt Angle:	0-60 degrees
Module Application:	Framed and Unframed
Panel Height From Ground:	60 cm
Column and Beam Coating:	EN ISO 1461
Column and Beam Material:	EN 10025 / EN 10029
Optional Beam Material:	EN 10346
Panel Retainer:	EN AW 6063
Connector Equipment:	DIN 934 / DIN933 / DIN 912, A2-70 DIN 50979

## (KPT16) Concrete Base Anchored Steel Car Park Mounting System with 4 Horizontal Panels

### Overview

KPT16, is a concrete base anchored steel support and mounting system with 4 horizontal panels for car park solar panels. The system is an optimal application solution for installations of PV projects in car parks. It provides strength and stability in car parks. After manufacturing the system components with high-technology machines and equipment, an excellent corrosion resistance is then achieved through hot-dip galvanized coating. The system, incorporating a high-level engineering design, provides assembly and cost advantages.



#### STEEL ANCHORAGE PIECE



- **CAP**  
M16X150 Knurled Bolt  
M16/M12 Flanged Nut  
M16/M12 Washer  
M12X30 Knurled Bolt

#### STEEL NPI COLUMN



- **NPI-200 x 90 x 7,5**  
M12X30 Knurled Bolt  
M12 Flanged Nut  
M8X30 Knurled Bolt  
M8 Flanged Nut  
M8/M12 Washer

#### STEEL BEAM



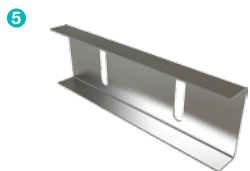
- **CR-150**  
M12X30 Knurled Bolt  
M12 Flanged Nut  
M8X30 Knurled Bolt  
M8 Flanged Nut  
M8/M12 Washer

#### STEEL PURLIN



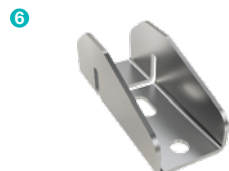
- **CA-100 / CA-110**  
M12X30 Knurled Bolt  
M12 Flanged Nut  
M8X30 Knurled Bolt  
M8 Flanged Nut  
M8/M12 Washer

#### STEEL PURLIN CONNECTOR



- **C-90 / C-100 / C-110**  
M12X30 Knurled Bolt  
M12 Flanged Nut  
M12 Washer

#### PURLIN CONNECTOR



- **U40**  
M8X30 Knurled Bolt  
M8 Flanged Nut  
M8 Washer

#### PANEL SIDE RETAINER



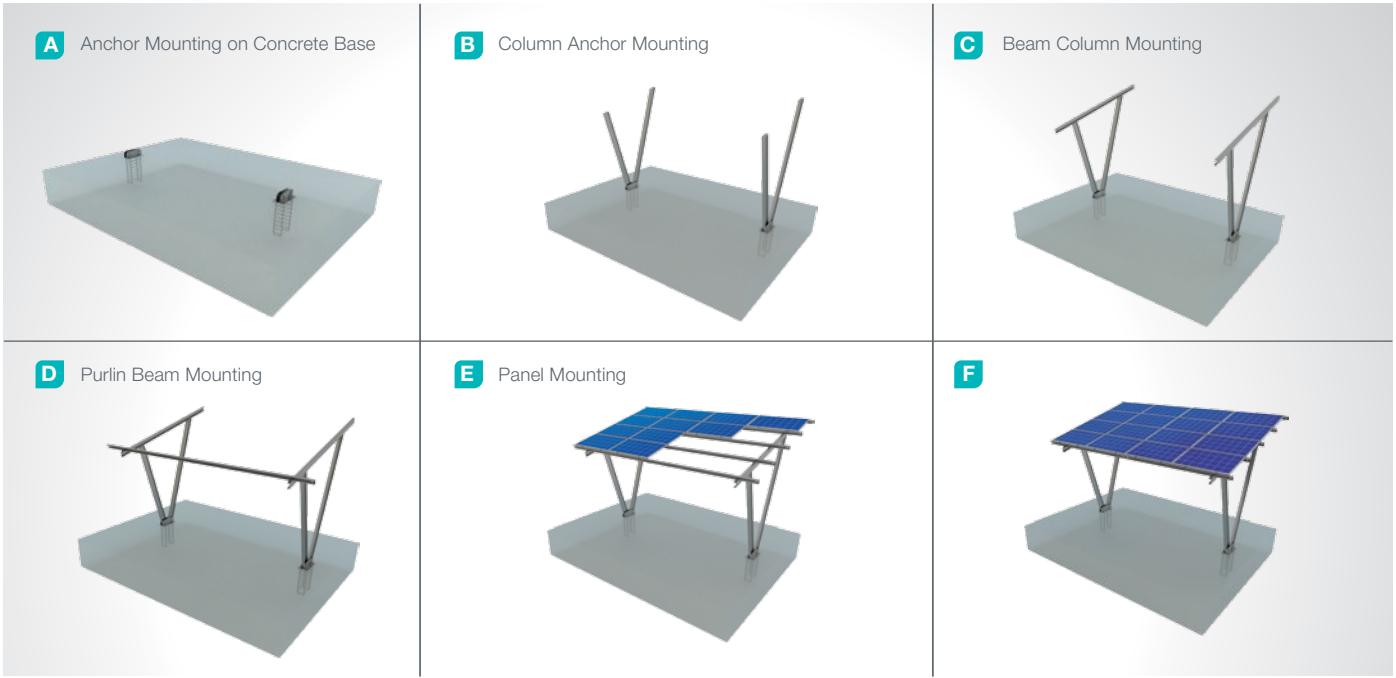
- **H30-H32-H40**  
M8X30 Hex Bolt  
M8 Flanged Nut

#### PANEL CENTER RETAINER



- **L70**  
M8X30 Hex Bolt  
M8 Flanged Nut

## Installation Phase



## Advantages

- Time saving for installation
- Cost saving for installation
- Suitable for all kinds of car parks
- Vehicle protection against sun, rain and snow
- Flexible look
- Suitable for continuous expansion
- Tailored design solutions for customer
- Customer oriented engineering solutions

## Technical Specifications

Explanation:	(KPT16) Concrete Base Anchored Steel Car Park Mounting System with 4 Horizontal Panels
Assembly Method:	Anchor on Concrete Base
Tilt Angle:	0-60 degrees
Module Application:	Framed and Unframed
Panel Height From Ground:	60 cm
Column and Beam Coating:	EN ISO 1461
Column and Beam Material:	EN 10025 / EN 10029
Optional Beam Material:	EN 10346
Panel Retainer:	EN AW 6063
Connector Equipment:	DIN 934 / DIN933 / DIN 912, A2-70 DIN 50979