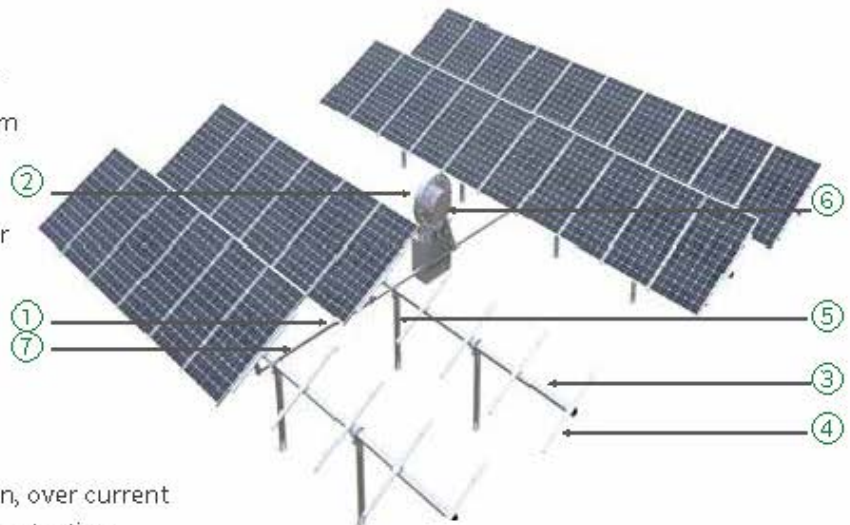


2.1.1 LDH 1.0 Linkage Tracking System

Feature

1. Time control and intelligent AI algorithm are combined to dynamically optimize the tracking angle.
2. Remote control by mobile phone APP or background system.
3. Strong wind monitor and max wind resistance up to 42m/s.
4. Anti-electromagnetic interference.
5. Time-controlled tracking of sun angle.
6. Maximum utilization of sunlight.
7. Safety & Protection: overheat protection, over current protection, abnormal drive unit, limit protection.



Specification

Tracking range (East-west) : $\pm 60^\circ$

Materials: AL6005/Q235/ SUS304

Drive type: Rotary driving

Protection class: IP65

Wind load: Wind protection starts when wind speed reaches 18m/s; Max wind load at 42m/s

Operating temperature range: $-40^\circ\text{C}\sim 70^\circ\text{C}$

Tracking accuracy: $< \pm 2^\circ$

Communication mode: RS485 Modbus protocol

Application: outdoor, urban areas, deserts, mountains, and marshes.

Component



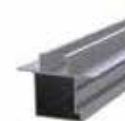
① Connecting Rod



② Rotary Reducer



③ Main Axis



④ Rail



⑤ Support



⑥ Drive Arm



⑦ Driven Arm