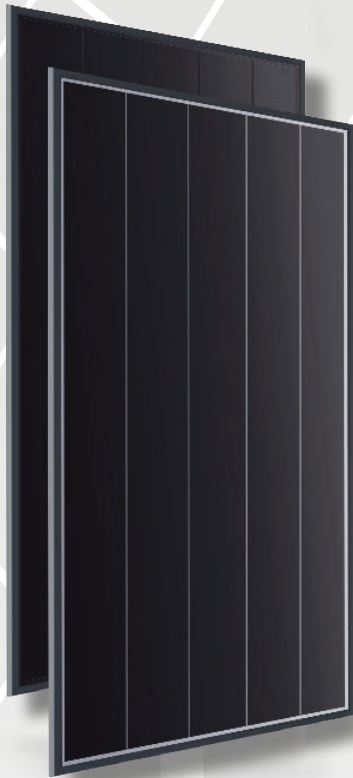


# X-CHROS XL Monocrystalline PERC High Efficiency SHINGLED

430 - 435 - 440 - 445 Wp



Shingled solar cells technology



Positive Tolerance



High Voltage 1500 Vdc



Low system cost



Safety and reliability



21.4 % max efficiency

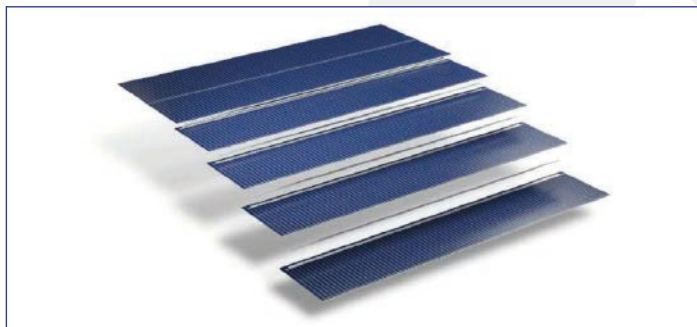


Uniform and beautiful appearance

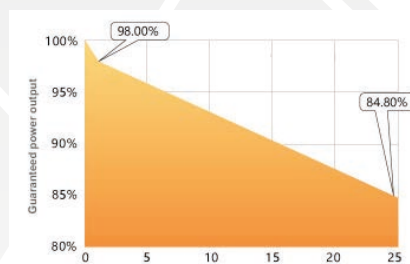


Low System Cost

The new photovoltaic modules X-CHROS XL is one of a wide range of products made by Sunerg and It is manufactured according to IEC 61215, IEC 61730 standard and CE. PERC Shingled Technology provides ultra -high efficiency with better performance in low irradiation. Maximizes installation capacity in limited space and lower tempertaure operation.



LINEAR WARRANTY



- look warranty terms -

CORRESPOND TO

| UNI9177 | PV CYCLE | CE |

UNI EN ISO 9001:2008

| Quality management system

UNI EN ISO 14001:2004

| Standards for environmental management system

UNI EN BS OHSAS 18001:2007

| International standards for occupational health and safety

		XMCH92430QBW+H		XMCH92435QBW+H		XMCH92440QBW+H		XMCH92445QBW+H	
		STC	NMOT	STC	NMOT	STC	NMOT	STC	NMOT
Open circuit Voltage	(Voc)	43.5 V	41.5 V	43.60 V	41.60 V	43.70 V	41.70 V	43.80 V	41.80 V
Voltage a Pmax.	(Vmp)	36.1 V	34.4 V	36.20 V	34.50 V	36.30 V	34.60 V	36.40 V	34.70 V
Short-circuit current	(Isc)	12.68 A	10.23 A	12.79 A	10.32 A	12.90 A	10.41 A	13.01 A	10.50 A
Current at Pmax.	(Imp)	11.92 A	9.41 A	12.02 A	9.49 A	12.13 A	9.57 A	12.23 A	9.66 A
Peak Power (Pmax) Tolerance		430 Wp	324 Wp	435 Wp	328 Wp	440 Wp	331 Wp	445 Wp	335 Wp
Module Efficiency		20.7%		20.90%		21.10%		21.40%	
Maximum voltage		1500 V DC							
Maximum series fuse rating		25A							
Operating Temperature		-40°C - +85°C							

Tolerance electric measurement ±3%

**\* STC** (Standard test conditions)

Irradiance 1000 w/m<sup>2</sup>, module temperature 25°C, AM= 1.5

**\* NMOT** (Nominal module operating temperature)

Irradiance 800 w/m<sup>2</sup>, temperature 20°C, wind speed 1m/s

**TEMPERATURE COEFFICIENT**

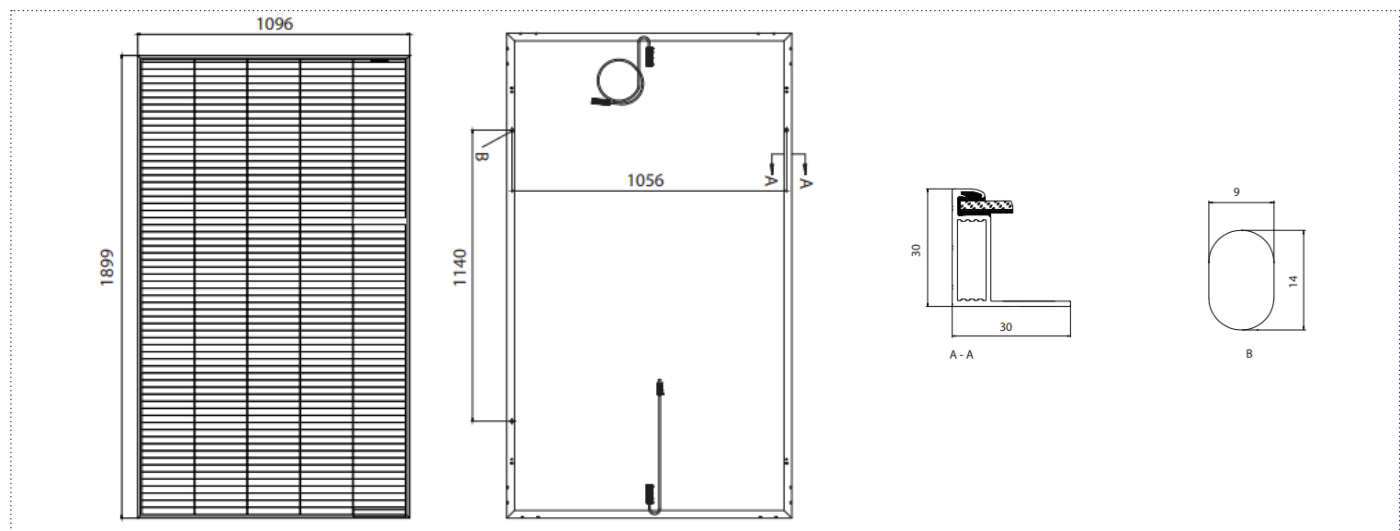
NMOT	42.3°C±2°C
Pmax Temperature Coefficient	-0.34%/ °C
Voc Temperature Coefficient	-0.27%/ °C
Isc Temperature Coefficient	0.04% / °C

**MECHANICAL CHARACTERISTIC**

Max. surface load capacity (Pa)	front 5400 / back 2400
Dimensions (mm)	1899 x 1096 x 30
Weight (Kg)	21.8
Encapsulation	EVA
Cells	320 cells (64*5)
Backsheet	High weatherability backsheet

**CONFIGURAZIONE DEL PAKAGING**

Moduli a pallet	36
Moduli per Container	864



**GENERAL INFORMATION**

Glass	tempered glass, 3.2mm
Farme	Anodized Aluminum alloy
Junction Box	IP68, 2 Bypass diodes
Output Cable - connectors	4.0mm <sup>2</sup> , +300mm/-1000mm(vertical) +220mm/-180mm(horizontal)

Sunerg Solar S.r.l. reserves the right to make changes to the technical data of the product without prior notice. The technical details of the form, although included with the utmost care, may contain errors or inaccuracies not attributable to Sunerg Solar S.r.l.