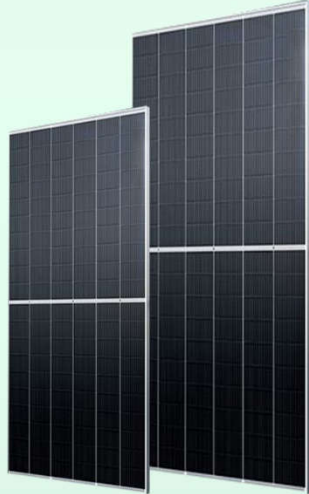


# APEX Series Mono PERC Cell Module



25 Years Guarantee



certificate



440 / 445 / 450 / 455 / 460



## High Efficiency

Advanced solar cell technology ensures, The high module efficiency up to 21.3%.



## Positive Tolerance

Module guarantees a positive-only power tolerance of 0 to +5w to bring extra benefit.



## Strong Load Capacity

Module is capable to withstand 2400Pa wind loads and 5400Pa Snow loads.



## Reliable quality

Module is manufactured in accordance with international quality standards ISO9001



## Higher Weatherproof Rating

J-Box performs module with an environmental protection rating to IP68.



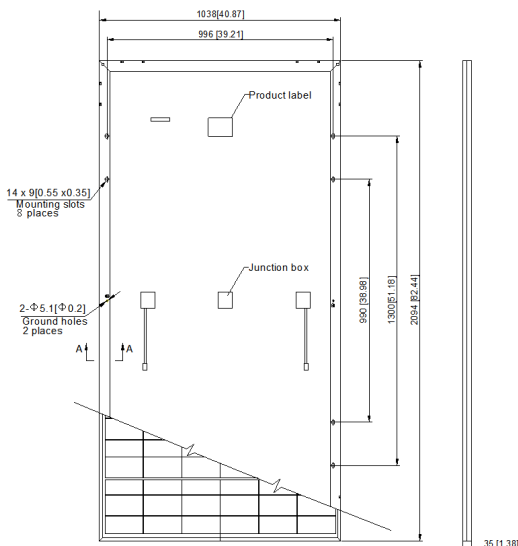
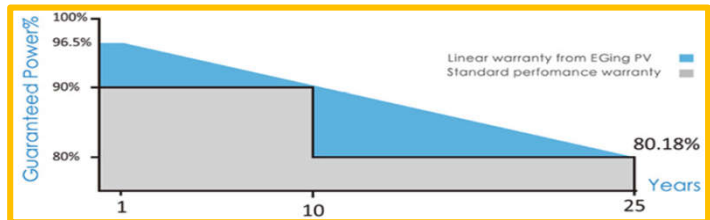
## Salt and Corrosion Resistant

Highly Certified conform in higher salinity zone

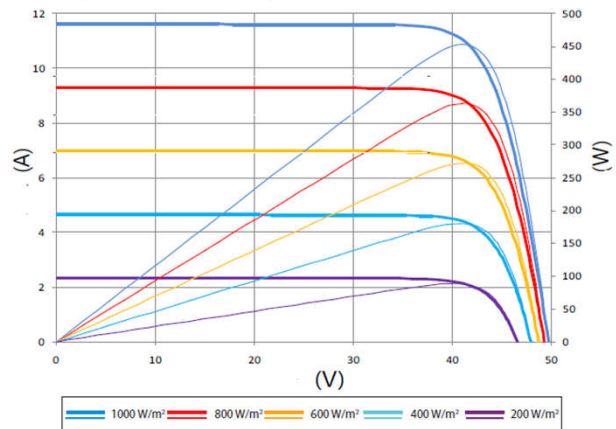


## Anti PID Solar Technology

Highly PID resistant in larger humidity areas



Current-Voltage & Power-Voltage Curve  
(GEP-AfMb450M)



## Electrical Characteristics

(STC)	APEX SERIES 1.0	APEX SERIES 1.1	APEX SERIES 1.2	APEX SERIES 1.3	APEX SERIES 1.4
	GEP-AfMb430MH	GEP-AfMb435MH	GEP-AfMb440MH	GEP-AfMb445MH	GEP-AfMb450MH
Maximum Power (Pmax)	430W	435W	440W	445	450
Tolerance of power	0/+5W	0/+5W	0/+5W	0/+5W	0/+5W
Maximum Power Voltage(Vmp)	40.60V	40.80V	41.00V	41.20V	41.40V
Maximum Power Current(Imp)	10.60A	10.67A	10.74A	10.81A	10.87A
Open Circuit Voltage(Voc)	48.40V	48.60V	48.80V	49.00V	49.20V
Short Circuit Current (Isc)	11.32A	11.40A	11.47A	11.54A	11.61A
Module Efficiency	19.80%	20.00%	20.20%	20.50%	20.70%
Operating module Temperature	- 40°Cto +85°C				
Maximum system(DC) Voltage	DC1000V/1500V(IEC)				
Series Fuse Rating	20A				
NOCT*	45±2°C				
Temperature Coefficients of Pmax	- 0.36%/°C				
Temperature Coefficients of Voc	- 0.28%/°C				
Temperature Coefficients of Isc	+ 0.048%/°C				

## MECHANICAL CHARACTERISTICS

Solar Cell	Mono crystalline 166×83mm 9BB	
Number of cells	144 ( 6×24 )	
Dimensions	2094×1038×35mm (82.44×40.87×1.38 inches )	
Weight	24.5Kg (50.71 lbs)	
Front Glass	3.2mm (0.13 inches) front glass	
Frame	Aanodized aluminum alloy	
Junction Box	IP68 rated	
Cable	4mm <sup>2</sup> solarcable 300mm(11.81 inches )	
Connector	MC4 PV-XT101.1/Z4S-abcde	

## PACKING CONFIGURATION

	20GP	40HC
Pieces per pallet	31	31
pallets per container	5	22
Pieces per container	155	682

**NOTE:**

- 1.Design and specifications are subject to change without based on customer's requirements.
- 2.Refer to the installation and operating manual or contact Green energy power Renewable for detailed information on approved installation and use of this product.