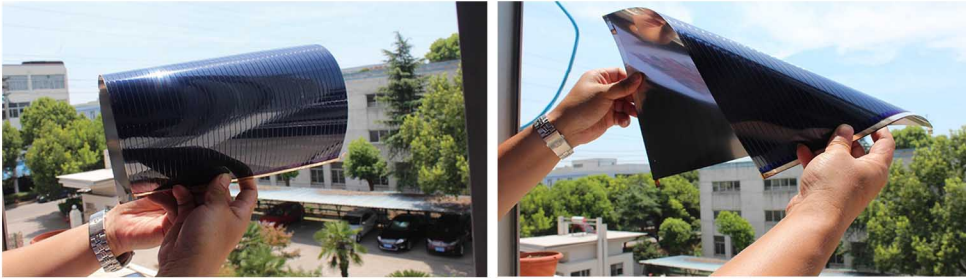


Flexible a-Si Panel

With substrate of super-thin stainless steel, a-Si panels are laminated with flexible, anti-impact and self-cleaning material. Its thickness is just 1.5mm, ultra-thin, super flexible, light-weight, anti-impact and excellent weak-light performance.



Electrical Characteristics

Model	Flex-a-Si-72	Flex-a-Si-144	Flex-a-Si-288
Maximum Power, Pmax(W)	72	144	288
Maximum Power Voltage, Vmp(V)	17.60	35.20	35.20
Maximum Power Current, Imp(A)	4.09	4.09	8.18
Open-circuit Voltage, Voc(V)	24.20	48.40	48.40
Short-circuit Current, Isc(A)	5.10	5.10	10.20
Power Tolerance (W)	0~+5		
Working Temperature (°C)	-40°C-85°C		
Current Temp Coefficient (%/°C)	0.12		
Voltage Temp Coefficient (%/°C)	-0.38		
Power Temp Coefficient (%/°C)	-0.23		
Series Fuse Rating (A)	1000V DC IEC		

STC: 25°C, 1000 W/m², AM 1.5

Electrical Characteristics

Model	Flex-a-Si-72	Flex-a-Si-144	Flex-a-Si-288
No. of Cell (pcs)	11	22	44
Panel Dimensions (mm)	2741×378×1	5392×378×1	5392×740×1
Weight (kg)	2.8	5.3	10.6
Solar Cell	Triple-Junction a-Si		
Junction Box	IP 68 rated with by-pass diode		
Cables	PV cable 4.0mm ² , (+)450 / (-)450 mm		
Connector	MC4 compatible		

