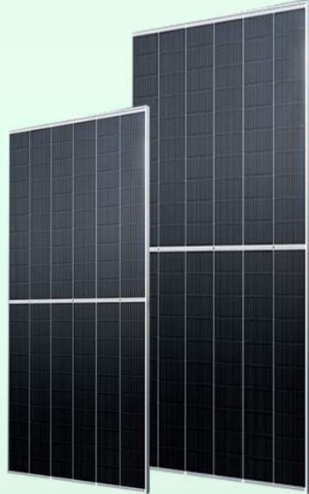


# APEX Series Bifacial Mono PERC Cell Module



25 Years Guarantee

GRADE  
**A**  
QUALITY



certificate



570 / 575 / 580 / 585 / 590



## High Efficiency

Advanced solar cell technology ensures, The high module efficiency up to 21.3%.



## Positive Tolerance

Module guarantees a positive-only power tolerance of 0 to +5w to bring extra benefit.



## Strong Load Capacity

Module is capable to withstand 2400Pa wind loads and 5400Pa Snow loads.



## Reliable quality

Module is manufactured in accordance with international quality standards ISO9001



## Higher Weatherproof Rating

J-Box performs module with an environmental protection rating to IP68.



## Salt and Corrosion Resistant

Highly Certified conform in higher salinity zone

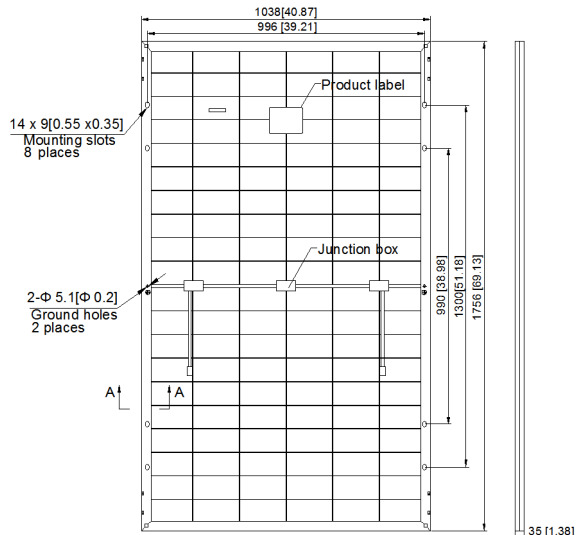
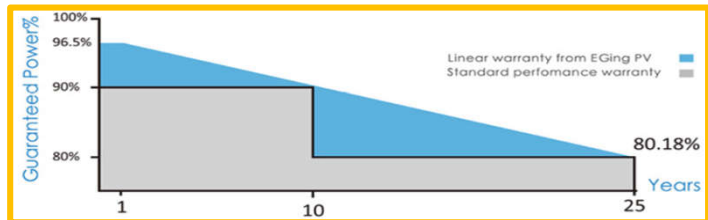


## Anti PID Solar Technology

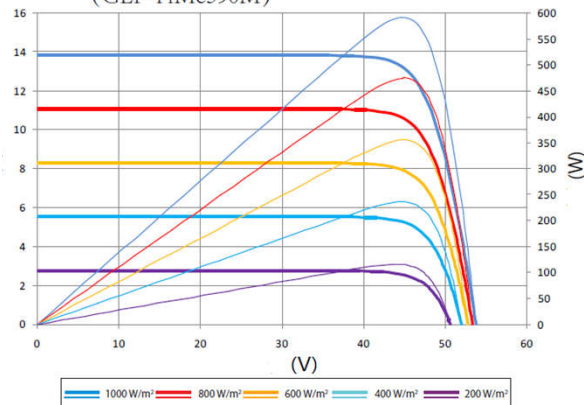
Highly PID resistant in larger humidity areas

30  
years  
Performance  
Guarantee

12  
years  
Product  
Warranty



Current-Voltage & Power-Voltage Curve  
(GEP-FfMc590M)



## Electrical Characteristics

(STC)	GEP-FfMc570M	GEP-FfMc575M	GEP-FfMc580M	GEP-FfMc585M	GEP-FfMc590M
	GEP-FfMc570MH	GEP-FfMc575MH	GEP-FfMc580MH	GEP-FfMc585MH	GEP-FfMc590MH
Maximum Power (Pmax)	570W	575W	580W	585W	590W
Tolerance of power	0/+5W	0/+5W	0/+5W	0/+5W	0/+5W
Maximum Power Voltage(Vmp)	44.7V	44.9V	45.1V	45.3V	45.5V
Maximum Power Current(Imp)	12.76A	12.81A	12.87A	12.92A	12.97A
Open Circuit Voltage(Voc)	53.0V	53.2V	53.4V	53.6V	53.8V
Short Circuit Current (Isc)	13.65A	13.7A	13.76A	13.81A	13.86A
Module Efficiency	20.6%	20.8%	21.0%	21.2%	21.3%
Operating module Temperature	- 40°C to +85°C				
Maximum system(DC) Voltage	DC1000V/1500V(IEC)				
Series Fuse Rating	20A				
NOCT*	45±2°C				
Temperature Coefficients of Pmax	- 0.36%/°C				
Temperature Coefficients of Voc	- 0.28%/°C				
Temperature Coefficients of Isc	+ 0.048%/°C				

## MECHANICAL CHARACTERISTICS

Solar Cell	Mono crystalline 182×91mm 10BB	
Number of cells	156 ( 6×26 )	
Dimensions	2438×1134×35mm ( 95.98×44.65×1.38 inches )	
Weight	31Kg (68.34 lbs)	
Front Glass	2.0 mm front glass	
Frame	Anodized aluminum alloy	
Junction Box	IP68 rated	
Cable	4mm <sup>2</sup> solar cable 300mm(11.81inches )	
Connector	MC4 PV-XT101.1/Z4S-abcde	

## PACKING CONFIGURATION

	20GP	40HC
Pieces per pallet	31	31
pallets per container	4	18
Pieces per container	124	558

**NOTE:**

- 1.Design and specifications are subject to change without based on customer's requirements.
- 2.Refer to the installation and operating manual or contact Green energy power Renewable for detailed information on approved installation and use of this product.