

## MBB-72M-166

## 440-455 Watt

### MONO-FACIAL MODULE

### P-Type

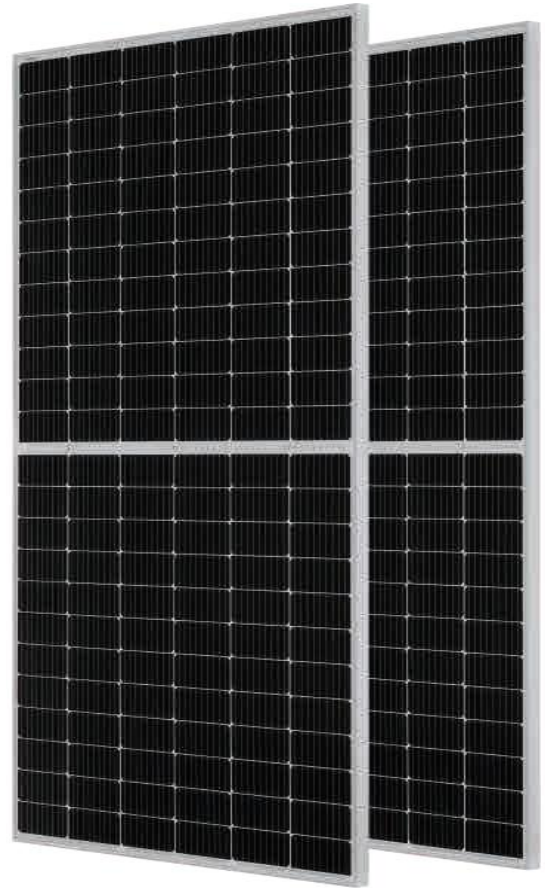
Positive power tolerance of 0~+3%

IEC 61215, IEC 61730

ISO 9001:2015: Quality Management System

ISO14001:2015: Environment Management System

ISO45001:2018: Occupational health and safety management systems



## Key Features



### Multi Busbar Technology

Better light trapping and current collection to improve module power output and reliability.



### Reduced Hot Spot Loss

Optimized electrical design and lower operating current for reduced hot spot loss and better temperature coefficient.



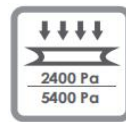
### Longer Life-time Power Yield

0.55% annual power degradation and 25 year linear power warranty.



### Durability Against Extreme Environmental Conditions

High salt mist and ammonia resistance.

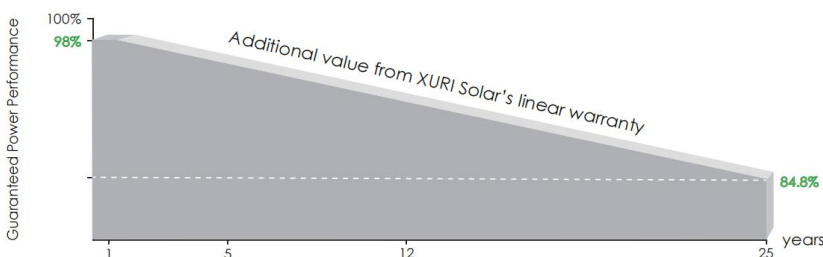


### Enhanced Mechanical Load

Certified to withstand: wind load (2400 Pascal) and snow load (5400 Pascal).



## LINEAR PERFORMANCE WARRANTY

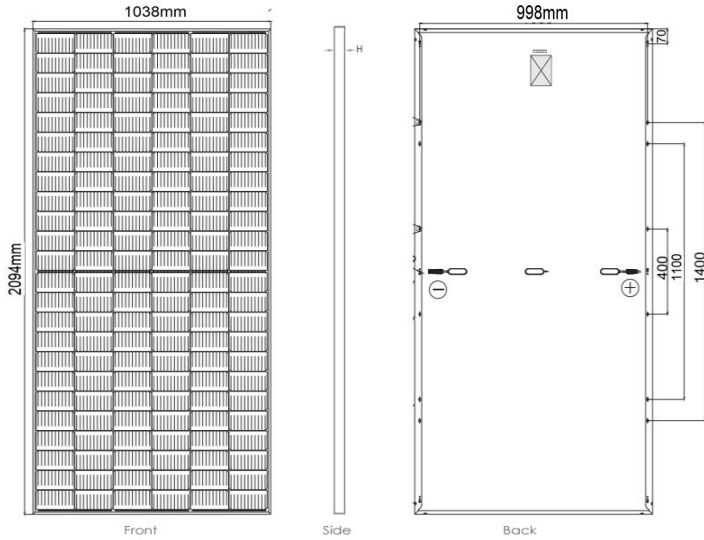


12 Year Product Warranty

25 Year Linear Power Warranty

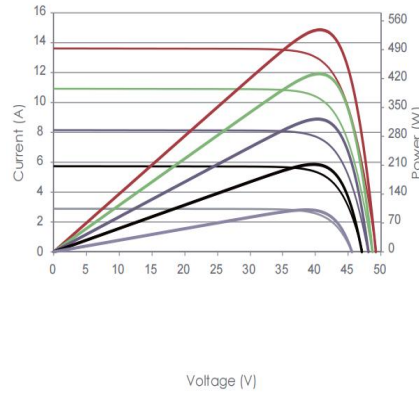
0.55% Annual Degradation Over 25 years

# Engineering Drawings

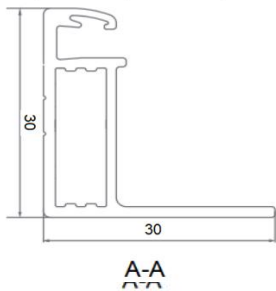
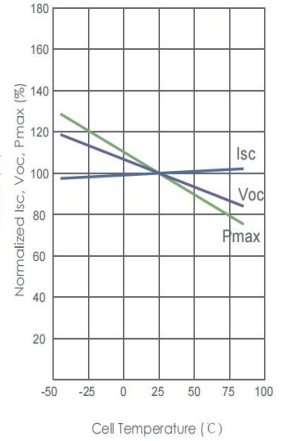


# Electrical Performance & Temperature Dependence

Current-Voltage & Power-Voltage Curves (455W)



Temperature Dependence of Isc, Voc, Pmax



Length:  $\pm 2$ mm  
 Width:  $\pm 2$ mm  
 Height:  $\pm 1$ mm  
 Row Pitch:  $\pm 2$ mm

## Mechanical Characteristics

|               |                                  |
|---------------|----------------------------------|
| Cell Type:    | P type Mono-crystalline 166X83mm |
| No. of Cells: | 144 (6×24)Pcs                    |
| Dimensions:   | 2094x1038x30mm                   |
| Weight:       | 23.5Kg                           |
| Front Glass:  | 3.2mm, Anti-Reflection Coating   |
| Frame:        | Anodized Aluminium Alloy         |
| Junction Box: | IP68 Rated                       |

## Packaging Configuration

( Two pallets = One stack )

Packaging Configuration : 72pcs / box, 792pcs / 40'HQ Container

Output Cables: 4mm<sup>2</sup>(TUV) Length:(+)300mm, (-)300mm or Customized Length

## SPECIFICATIONS

| Module Type                               | XRM440W-72-166     |        | XRM445W-72-166 |        | XRM450W-72-166 |        | XRM455W-72-166 |        |
|---|--------------------|--------|----------------|--------|----------------|--------|----------------|--------|
|   | STC                | NMOT   | STC            | NMOT   | STC            | NMOT   | STC            | NMOT   |
| Maximum Power (Pmax)                      | 440Wp              | 327Wp  | 445Wp          | 331Wp  | 450Wp          | 335Wp  | 455Wp          | 339Wp  |
| Maximum Power Voltage (Vmp)               | 40.97V             | 37.89V | 41.17V         | 38.10V | 41.37V         | 38.31V | 41.56V         | 38.47V |
| Maximum Power Current (Imp)               | 10.74A             | 8.64A  | 10.81A         | 8.69A  | 10.88A         | 8.74A  | 10.95A         | 8.81A  |
| Open-circuit Voltage (Voc)                | 48.87V             | 46.03V | 49.07V         | 46.32V | 49.27V         | 46.41V | 49.46V         | 46.59V |
| Short-circuit Current (Isc)               | 11.39A             | 9.21A  | 11.46A         | 9.26A  | 11.53A         | 9.31A  | 11.60A         | 9.37A  |
| Module Efficiency STC (%)                 | 20.25%             |        | 20.48%         |        | 20.71%         |        | 20.94%         |        |
| Operating Temperature( °C)                | -40°C~+85°C        |        |                |        |                |        |                |        |
| Maximum system voltage                    | 1000/1500VDC (IEC) |        |                |        |                |        |                |        |
| Maximum series fuse rating                | 25A                |        |                |        |                |        |                |        |
| Power tolerance                           | 0~+3%              |        |                |        |                |        |                |        |
| Temperature coefficients of Pmax          | -0.35% /°C         |        |                |        |                |        |                |        |
| Temperature coefficients of Voc           | -0.28% /°C         |        |                |        |                |        |                |        |
| Temperature coefficients of Isc           | 0.048% /°C         |        |                |        |                |        |                |        |
| Nominal operating cell temperature (NOCT) | 45±2 °C            |        |                |        |                |        |                |        |

\*STC: Irradiance 1000W/m<sup>2</sup>, module temperature 25°C, AM=1.5

\*NMOT: Irradiance 800W/m<sup>2</sup>, ambient temperature 20°C, wind speed 1 m/s

Jiaxing Xuri Solar Technology Co.,Ltd.

Email:xyj@xurisolar.com

Add:V15 NO.500 KANGHE ROAD,XIUZHOU DISTRICT, JIAXING CITY,ZHEJIANG PROVINCE CHINA

Specific ations included in this datasheet are subject to change without notice.

Tel:+86 573 83312838

Web:www.xurisolar.com

**XRM440-455W-72-166**