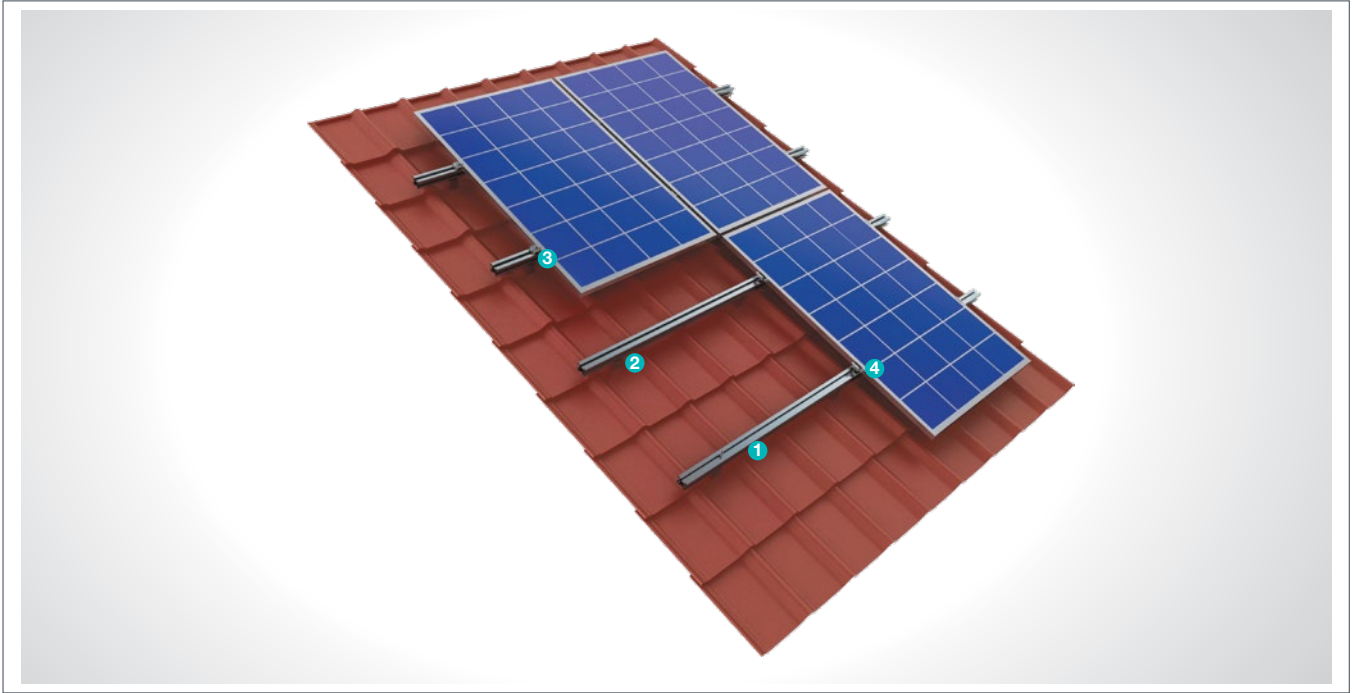


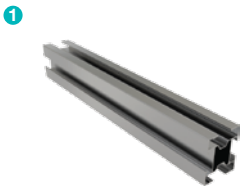
(KPT30) Tile Roof Steel And Aluminum Mounting System

Overview

KPT30, is a steel and Aluminum structured mounting system and for tile type roofs. The system, incorporating a high-level engineering design, provides assembly and cost advantages.

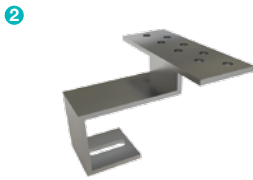


ALUMINUM PURLIN



■ CA-60x50
M10/T25 Head Bolt
M10 Flanged Nut

TILE PURLIN CONNECTION PIECE



■ KAP
M10/T25 Head Bolt
M10 Flanged Nut
Self-drilling Screw

PANEL SIDE RETAINER



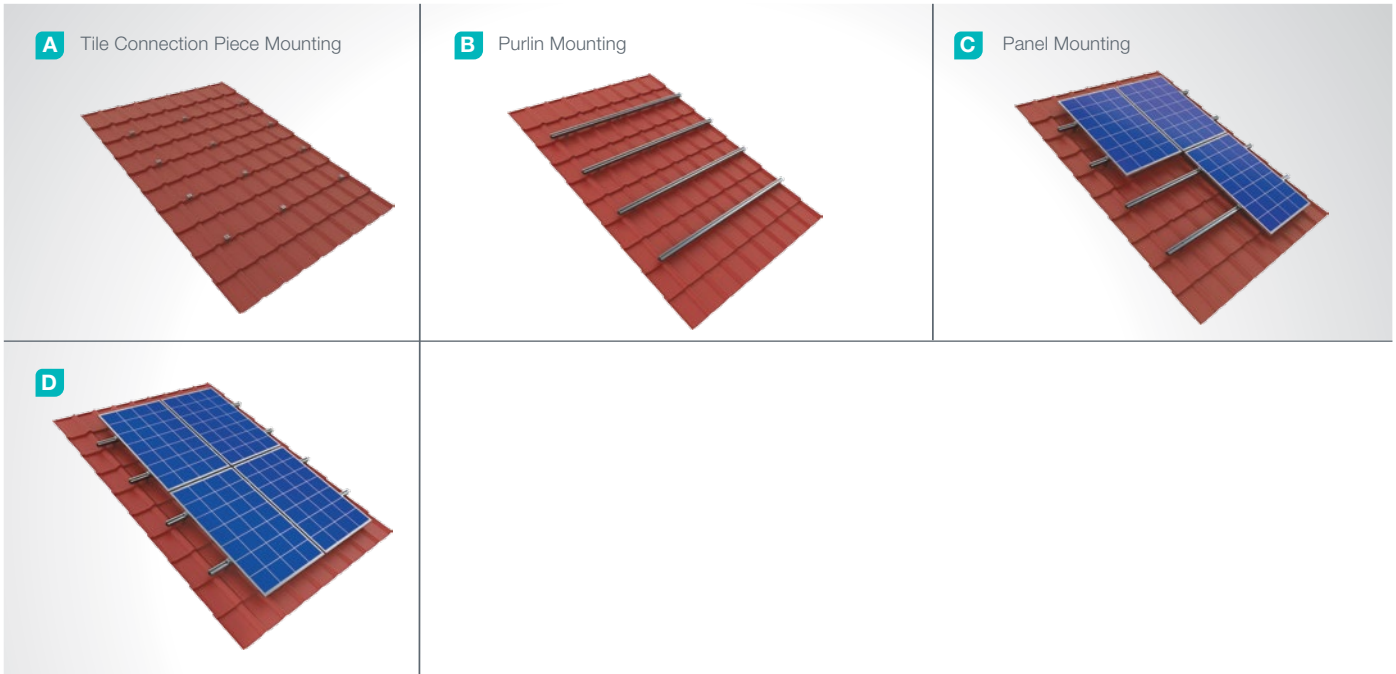
■ H30-H32-H40
M8X30 Hex Bolt
M8 Rectangular Nut

PANEL CENTER RETAINER



■ L70
M8X30 Hex Bolt
M8 Rectangular Nut

Installation Phase



Advantages

- Time saving for installation
- Cost saving for installation
- Horizontal and vertical positioning
- Suitable positioning according to roof tilt
- Suitable solutions for different roof types
- Tailored design solutions for customers
- Customer oriented engineering solutions

Technical Specifications

Description:	(KPT30) Tile Roof Steel And Aluminum Mounting System
Mounting Method:	Assembly to Tile Roof
Module Application:	Framed and Unframed
Beam Retainer:	EN AW 6063
Beam Retainer Coating:	EN ISO 1461
Beam Retainer Material:	EN 10025 / EN 10029
Panel Retainer:	EN AW 6063
Fitting Equipment:	DIN 934 / DIN933 / DIN 912, A2-70 DIN 50979