

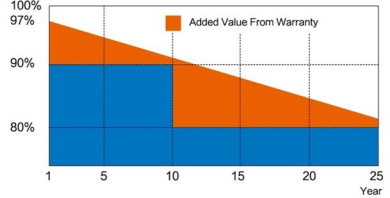


KEY FEATURES

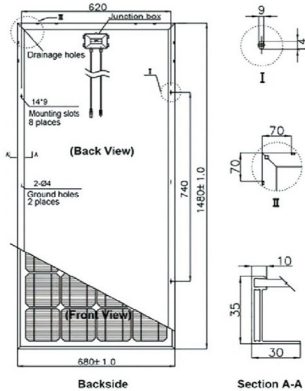
-  **PID RESISTANT**
-  **High Power Output**
-  **High transmission, low Iron Tempered Glass**
-  **Bypass Diodes Protection**
-  **Salt Mist And Ammonia Resistance Test**

Superior Warranty

- 10-year product warranty
- 25-year linear power output warranty



DIMENSIONS



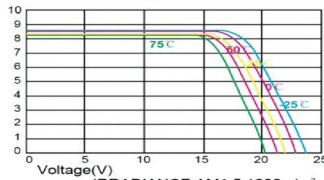
MECHANICAL CHARACTERISTICS

Frame Material	Anodized Aluminium Alloy
Front Glass	Tempered Glass
Back Cover	TPT(Composite film)
Cell Encapsulant	EVA
Junction box	IP67
Cables	4mm ² , 90cm
Connector	MC4
Max wind load	2400Pa
Max snow load	5400Pa

TEMPERATURE COEFFICIENT

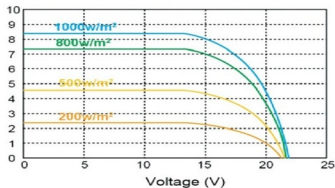
NOCT	47°C (±2°C)
Temperature Coefficient of Pmax	-0.45%/°C
Temperature Coefficient of Voc	-0.35%/°C
Temperature Coefficient of Isc	0.05%/°C
Operating Temperature	-40°C ~ +85°C

I-V CURVES



ELECTRONICAL CHARACTERISTICS

Module Type	OS-M36-150	OS-M36-165	OS-M36-175
Maximum Power(Pmax)	150W	165W	175W
Maximum Power Voltage(Vmp)	18.0V	18.0V	18.0V
Maximum Power Current(Imp)	8.33A	9.17A	9.72A
Open Circuit Voltage(Voc)	21.4V	21.66V	22.49V
Short Circuit Current(Isc)	8.83A	9.14A	9.81A
Number of Cells	36(4*9)	36(4*9)	36(4*9)
Size of Cells(mm)	156*156	156*156	156*156
Dimensions(mm)	1480*670*35	1480*670*35	1480*670*35
Power Tolerance	±3%		
Maximum System Voltage	1000VDC		



9.81A