



ERA-72HCB

Monocrystalline Half-Cut Bifacial Solar Module

KEY FEATURES

MBB Half-Cut Solar Cell:
144 cells (6X24); 10 busbar solar cell.

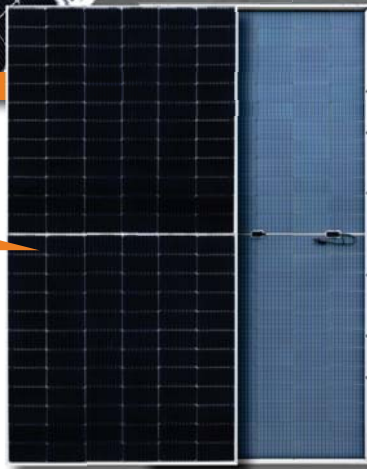
Higher Module Conversion Efficiency:
Higher module output up to 550W with module efficiency up to 21.5%.

Low-light Performance:
Advanced glass and surface texturing allow for excellent performance in low-light environments.

Light-weight design
Light-weight design using transparent backsheet for easy installation and low BOS cost.

Higher Power Output
Module power increases 5-25% generally, bringing significantly lower LCOE and higher IRR.

182



+ WATTS POSITIVE TOLERANCE

12 YEARS PRODUCT WARRANTY

25 YEARS LINEAR POWER WARRANTY

BIFACIAL, MONOCRYSTALLINE, 72-CELL HALF-CUT SERIES

ELECTRICAL PERFORMANCE

Module type:	ESPHSC	525M	530M	535M	540M	545M	550M
Maximum Power(Wp)		525W	530W	535W	540W	545W	550W
Open circuit Voltage(Voc)		49.05V	49.20V	49.35V	49.50V	49.65V	49.80V
Short circuit Current(Isc)		13.65A	13.71A	13.78A	13.85A	13.92A	13.98A
Maximum Power Voltage(Vm)		41.20V	41.35V	41.50V	41.65V	41.80V	41.95V
Maximum Power Current(Imp)		12.75A	12.82A	12.90A	12.97A	13.09A	13.12A
Module efficiency		20.3%	20.5%	20.7%	20.9%	21.1%	21.3%
Maximum Series Fuse		25A					
Watts positive tolerance		0+5%					
Number of Diode		3					
Standard Test Conditions		1000W/M ² ,25°C,AM1.5					
Maximum System Voltage		1500V/DC					
Temperature-Coefficient Isc		+0.048%/°C					
Temperature-Coefficient Voc		-0.270%/°C					
Temperature-Coefficient Pmpp		-0.350%/°C					
Normal Operating Cell Temperature		-40°C...+85°C					
Load Capacity for the cover of the module (glass)		5400Pa(IEC61215)(snow)					
Load Capacity for the front & back of the module		2400Pa(IEC61215)(wind)					
Product Certificate		IEC61215,IEC61730,INMETRO					
Company Certificate		ISO9001,ISO14001,ISO18001					

BIFACIAL OUTPUT - REAR SIDE POWER GAIN

5%	Maximum Power(Wp)	551W	557W	562W	567W	572W	577W
	Module efficiency	21.55%	21.79%	21.98%	22.18%	22.37%	22.57%
15%	Maximum Power(Wp)	604W	610W	615W	621W	626W	632W
	Module efficiency	23.63%	23.86%	24.06%	24.29%	24.49%	24.72%
25%	Maximum Power(Wp)	656W	663W	669W	675W	681W	687W
	Module efficiency	25.66%	25.93%	26.17%	26.4%	26.64%	26.87%

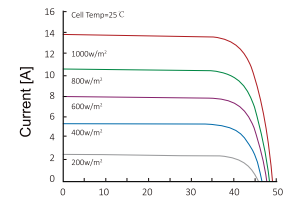
MECHANICAL CHARACTERISTICS

Front cover (material / thickness)	low-iron tempered glass / 3.2mm
Backsheet (color)	transparent
Cell (quantity / material / dimensions)	144(6x24) / monocrystalline silicon,bifacial
Frame (material / color)	aluminum hollow-chamber frame on each side anodized aluminum alloy / silver
Junction box (protection degree)	≥IP68
Cables & Plug connectors	4mm ² , 300mm in length,length can be customized
Module Dimensions (L / W / H)	2279x1134x35mm
Module Weight	27.2kg
Application class	Class A
Electrical protection class	Class II
Fire safety class	Class C

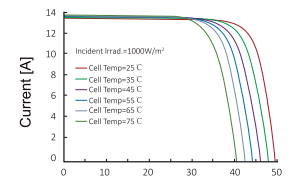
PACKING

Container Size	Units/Pallet (PCS)	Weight/Pallet (KG)	Pallet Measurement (mm)	Units/Container (PCS)
40HQ	31	858	2285x1130x1260	620

CURRENT-VOLTAGE CURVES:



Module characteristics at constant module temperatures of 25°C and variable levels of irradiance



Module characteristics at variable module temperatures and constant module irradiance of 1.000 W/m²

MODULE DIAGRAM:

