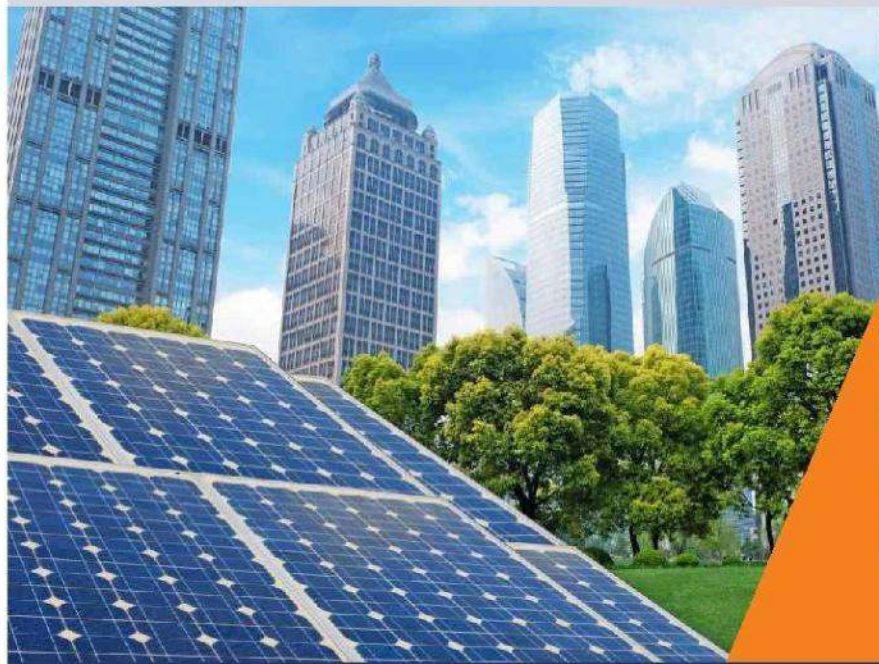


## SUNON SERIES INNOVATIVE AND COST-EFFECTIVE POWER SOLUTION



**without battery status**



**AC failed status**

## MAIN FEATURES

1. Pure sine wave solar inverter
2. Output power factor 1
3. Cold start function
4. Wide PV Input range, work without battery
5. Selectable high power charging current
6. Auto restart while AC is recovering
7. Overload and short circuit protection
8. Configurable AC/ Solar input priority via LCD setting
9. Compatible with mains voltage or generator power
10. Smart battery charge design for optimized battery performance
11. Selectable AC input voltage range for home appliances and personal computers

TECHNICAL PARAMETER			
Model	<b>SUNON 3KW</b>	<b>SUNON 5KW</b>	
The rated power	<b>3KVA/3KW</b>	<b>3KVA/5KW</b>	
<b>PV INPUT(DC)</b>			
Max.PV Array Power	4000W		
Nominal PV Voltage	240VDC		
PV Array MPPT Voltage Range	120~450VDC		
Max.PV Array Open Circuit Voltage	500VDC		
Max.Charging Current(AC+solar)	80Amp		
<b>AC INPUT(AC)</b>			
Nominal Input Voltage	230VAC ± 5%		
Low Loss Voltage	170VAC±7V(UPS);90VAC±7V(Appliances)		
Low Loss Return Voltage	180VAC±7V(UPS);100VAC±7V(Appliances)		
High Loss Voltage	280VAC±7V		
High Loss Return Voltage	270VAC±7V		
Max.AC Input Voltage	300VAC		
Nominal Input Frequency	50Hz/60Hz(Auto detection)		
Transfer Time	10ms typical(UPS);20ms typical(Appliances)		
<b>BATTERY MODE OUTPUT(AC)</b>			
Nominal Output Power	<b>3KVA/3KW</b>	<b>5KVA/5KW</b>	
Surge Power	<b>6000VA</b>	<b>10000VA</b>	
Nominal Output Voltage	230VAC±5%		
Output Waveform	Pure Sine wave		
Efficiency(DC to AC)(Peak)	93%		
<b>UTILITY CHARGER</b>			
Nominal DC Voltage	<b>24VDC</b>	<b>48VDC</b>	
Maximum Charging Current	60Amp		
Bulk Charging Voltage	Flooded Battery	29.2VCD	58.4VCD
	AGM/Gel Battery	28.2VCD	56.4VCD
Floating Charging Voltage	27VCD	54VCD	
OverCharge Protection	33VCD	63VCD	
<b>PHYSICAL</b>			
Dimension, DxWxH(mm)	481*313*117		
Net Weight(kgs)	9.8	10.5	
Communication Port	RS-232/USB		
<b>ENVIRONMENT</b>			
Humidity	5~95% RH(Non condensing)		
Operating Temperature	-10 to 55°C		
Altitude	0~1000m		