

Metal Roof Mounting

(SS-MRM-01)

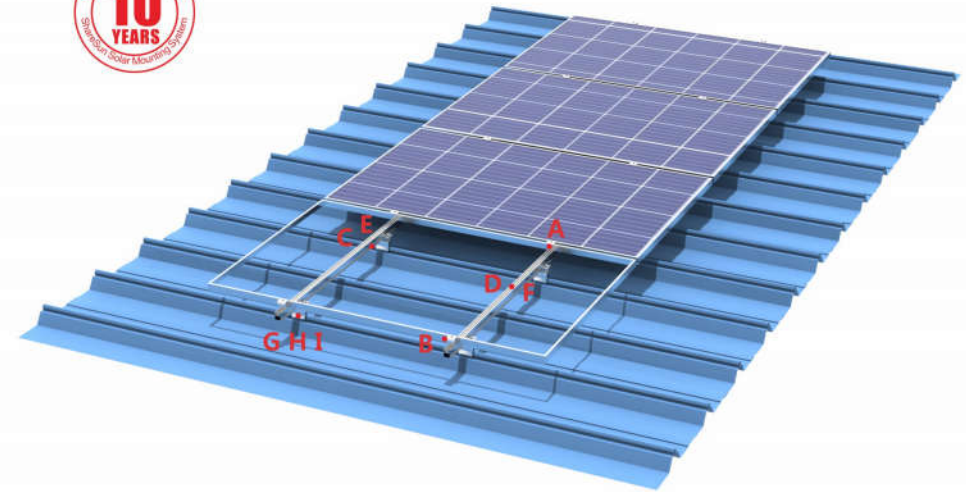


System introduction

Metal Roof Mounting is an universal system for metal roofs. We use aluminium alloy 6005 T5 or 6063 T5 for structure material. The fasteners are stainless steel 304. According to the roof condition, there are many kinds of clamps and tracks to choose. On the basis of meeting the mechanical calculation, customers can achieve the best cost.

Technical Data

Installation site: Metal roof
 Installation angle: 0 degree
 PV modules: framed or unframed
 Module layout : Vertical or horizontal
 Max wind speed: 45m/s
 Material: Alu 6005 T5 , 6063 T5& SUS304
 Color: Natural or customized
 Standards: BS6399, JISC 8955, Eurocode 1, DIN 1055, AS/NZS 1170 and other standards
 Warranty: 10 years warranty



Component List



A
Middle Clamp



B
End Clamp



C
Rail 26*30
splice



D
Rail 26*30



E
Rail 35*36
splice



F
Rail 35*36



G
Chikok
Clamp 1



H
Chikok
Clamp 2



I
Trapezoidal seat
(with diverter plate)