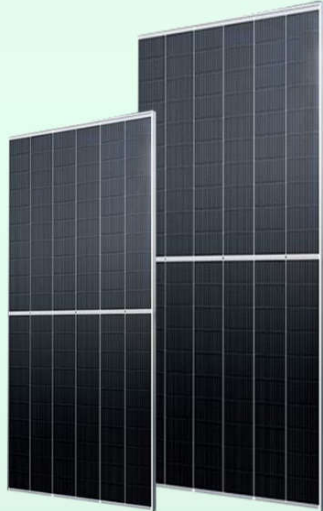


OMEGA Max Series Mono PERC Cell Module



25 Years Guarantee

GRADE
A
QUALITY



certificate



530 / 535 / 540 / 545 / 550



High Efficiency

Advanced solar cell technology ensures, The high module efficiency up to 21.3%.



Positive Tolerance

Module guarantees a positive-only power tolerance of 0 to +5w to bring extra benefit.



Strong Load Capacity

Module is capable to withstand 2400Pa wind loads and 5400Pa Snow loads.



Reliable quality

Module is manufactured in accordance with international quality standards ISO9001



Higher Weatherproof Rating

J-Box performs module with an environmental protection rating to IP68.



Salt and Corrosion Resistant

Highly Certified conform in higher salinity zone

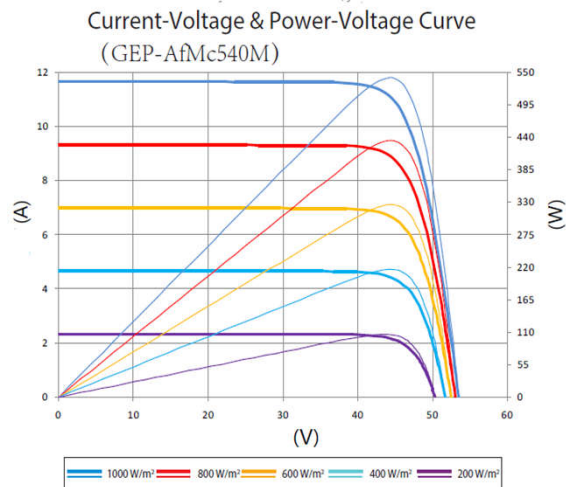
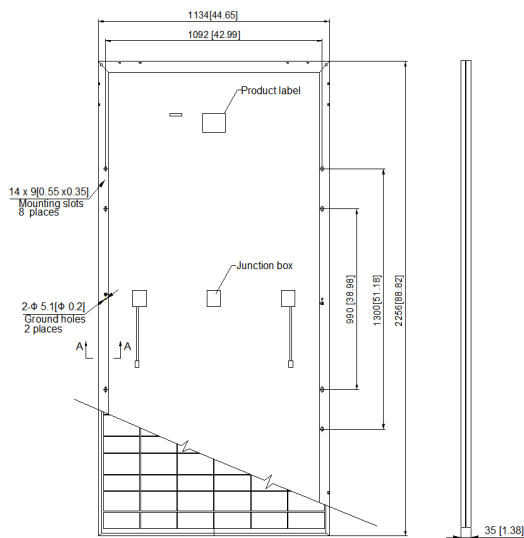
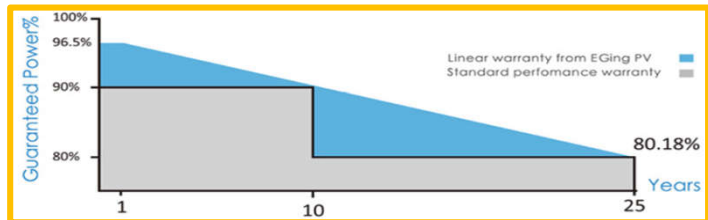


Anti PID Solar Technology

Highly PID resistant in larger humidity areas

30
years
Performance
Guarantee

12
years
Product
Warranty



Electrical Characteristics

(STC)	GEP -Aa+530P	GEP -Aa+535P	GEP -Aa+540P	GEP -Aa+545P	GEP -Aa+5500P
	GEP -Aa+530PH	GEP -Aa+535PH	GEP -Aa+540PH	GEP -Aa+545PH	GEP -Aa+550PH
(Maximum Power (Pmax))	530W	535W	540W	545W	550W
Tolerance of power	0/+5W	0/+5W	0/+5W	0/+5W	0/+5W
Maximum Power Voltage(Vmp)	41.35V	41.5V	41.65V	41.8V	41.95V
Maximum Power Current(Imp)	12.83A	12.9A	12.97A	13.04A	13.11A
Open Circuit Voltage(Voc)	49.2V	49.35V	49.5V	49.65V	49.80V
Short Circuit Current (Isc)	13.71A	13.78A	13.85A	13.92A	13.99A
Module Efficiency	20.5%	20.7%	20.9%	21.1%	21.3%
Operating module Temperature	- 40°C to +85°C				
Maximum system(DC) Voltage	1000V/1500V(IEC)				
Series Fuse Rating	25A				
NOCT*	45±2°C				
Temperature Coefficients of Pmax	- 0.36%/°C				
Temperature Coefficients of Voc	- 0.304%/°C				
Temperature Coefficients of Isc	+ 0.050%/°C				

MECHANICAL CHARACTERISTICS

Solar Cell	Monocrystalline 182 – 10BB	
Number of cells	144 (6 x 24)	
Dimensions	2279×1134×35mm	
Weight	27.3Kg (71.21lbs)	
Front Glass	3.2mm Tempered Glass	
Frame	Anodized aluminum alloy	
Junction Box	IP68 rated	
Cable	4mm ² solar cable 300mm (11.81 inches)	
Connector	MC4 PV-XT101.1/Z4S - ABCDE	

PACKING CONFIGURATION

	20GP	40HQ
Pieces per pallet	31	31
pallets per container	5	20
Pieces per container	155	620

NOTE:

- 1.Design and specifications are subject to change without based on customer's requirements.
- 2.Refer to the installation and operating manual or contact Green energy power Renewable for detailed information on approved installation and use of this product.