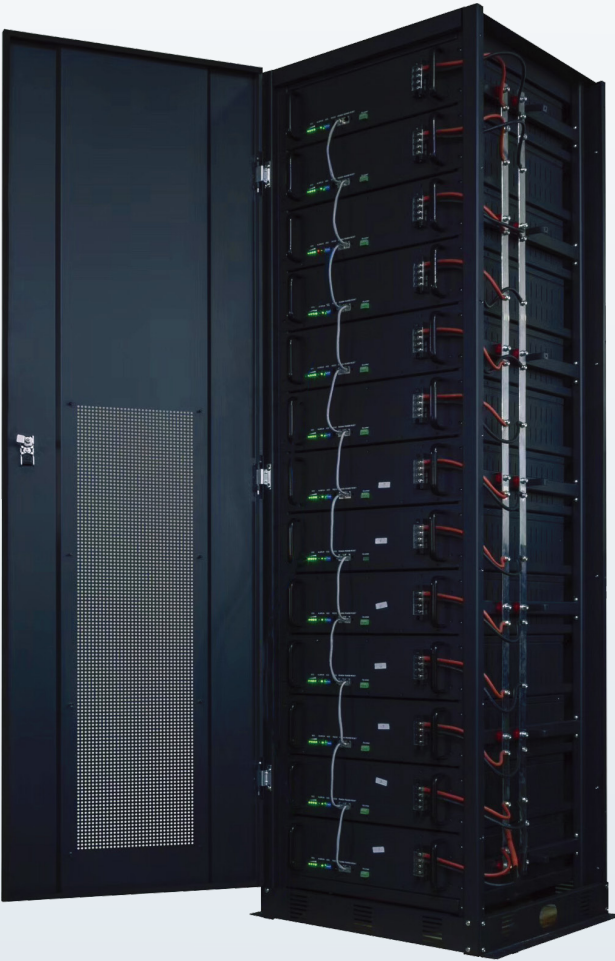


EL Series 48v 50AH-100AH Lithium Battery



Features:

- ◆ Longer Cycle Life, cycle life up to 3,500 times, 5 times that of ordinary lead-acid batteries. Help reduce battery replacement costs and overall costs.
- ◆ Lighter weight, high density capacity, 3 times the capacity of lead-acid batteries under the same volume.
- ◆ Higher Power, delivers twice power of lead acid battery, even high discharge, while maintain high energy capacity.
- ◆ Wider Temperature Range:-20℃~60℃
- ◆ Super safety performance, Lithium iron phosphate chemistry eliminates the risk of explosion or combustion due to high impact, overcharging or short circuit situation.
- ◆ Complete BMS function, powerful protection, with overcharge, over discharge, over current, over temperature and Short circuit protection.
- ◆ Intelligent monitoring, the unit cell can be monitored from time to time, support parallel function, support up to 15 sections.
- ◆ Balanced function ensures consistent battery balance per cell and maximizes battery life.
- ◆ Wide application area, Data Center , Telecommunication , Solar/wind energy storage system , UPS, Inverter and backup power, Electrical vehicles and so on.

Specifications

High Frequency Online UPS

LED Model		EL4850-50	EL48100-105
LCD MODEL		EL4850-50	EL48100-105
Electrical Characteristics	Rated voltage	51.2V	
	Rated Capacity	50AH	105AH
	Energy	2560Wh	5376Wh
	Internal Resistance	≤60mΩ	≤40mΩ
	Cycle Life	≥3500 cycles @ 80% DOD, 25℃, 0.2C ≥3000 cycles @ 80% DOD, 25℃, 1C	
	Design Life	≥10 years	
	Months Self Discharge	≤2%, @35℃	
	Efficiency of Charge	≥98%	
	Efficiency of Discharge	≥99% @ 0.2C    ≥96% @ 1C	
Charge	Charge Cut-off Voltage	59.2V±0.1V	
	Charge Mode	0.5C to 57.6V, then 57.6V charge current to 0.01C (CC/CV)	
	Charge Current	25A	50A
	Max. Charge Current	30A	55A
	Continuous Current	25A	50A
	Limit charge current	10A/20 optional	
Discharge	Max. Continuous Discharge Current	50A	100A
	Discharge Cut-off Voltage	41.6V±0.2V	
Other	Plastic Case	Iron (Insulation painting)	
	Output Interface	Terminal block	
	Protective function	Over charge, Over discharge, Over current, Over temperature, Short circuit	
	Communication Interface	RS485/RS232	
	Dry contact	YES	
	Max parallel connection	15PCS	
	SOC Light	4*LED	
Environmental	Charge Temperature	-5℃~60℃ (Under 0℃ with reduced charge current)	
	Discharge Temperature	-20℃~60℃ (Under 0℃ work with reduced capacity)	
	Storage Temperature	-40℃~55℃ @ 60%±25% relative humidity	
	Operating Humidity	20-90% (No condensation )	
	Water Dust Resistance	Ip20	
Weight	Net weight(kg)	31	41
Dimension	L*W*H(mm)	450*494*134mm(3U)	450*494*178mm(4U)

◆ Product specifications are subject to change without further notice.

