

PW-340W-72C-M  
 PW-345W-72C-M SERIES 6 INCH 72 CELLS

# 340-345 WATT

THE  
**OBSIDIAN**  
 SERIES  
**MONOCRYSTALLINE**



## KEY FEATURES



Bankable products



Top rank in Photon yield measurement



Safety for fire risk



Outstanding power output capability at low irradiance



Triple 100% Electroluminescence (EL) tests minimize breakage rate



Tested and certified according to newest IEC standard  
 IEC61730-1:2016 IEC61215-1:2016  
 IEC61730-2:2016 IEC61215-2:2016

### MANAGEMENT SYSTEM

ISO 9001: Quality management system  
 ISO 14001: Standard for environmental management system  
 OHSAS 18001: International standard for occupational health and safety assessment system

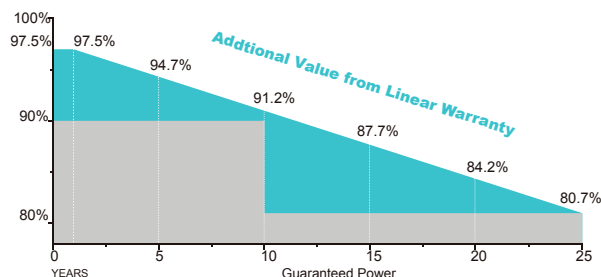
### INSURANCE



### PRODUCT CERTIFICATES



### WARRANTY



Guarantee on product material and workmanship



linear power output warranty

Specifications are subject to change without further notification © Copyright 2019 Powerwave



## POWERWAVE

[www.powerwave.com.au](http://www.powerwave.com.au) [sales@powerwave.com.au](mailto:sales@powerwave.com.au)

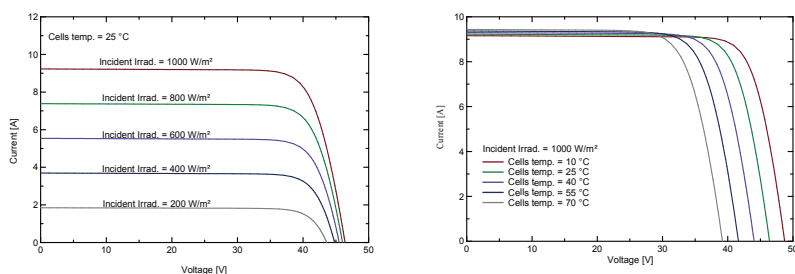
131 Millaroo Drive, Helensvale, Gold Coast Australia

**Electrical Characteristics**

Module Type	PW-340W-72C-M		PW-345W-72C-M	
	STC	NOCT	STC	NOCT
Maximum Power -P <sub>mp</sub> (W)	340	252	345	256
Open Circuit Voltage -V <sub>oc</sub> (V)	46.6	43.0	46.8	43.2
Short Circuit Current -I <sub>sc</sub> (A)	9.32	7.59	9.43	7.64
Maximum Power Voltage -V <sub>mp</sub> (V)	37.7	35.5	37.9	35.6
Maximum Power Current -I <sub>mp</sub> (A)	9.02	7.10	9.11	7.19
Module Efficiency STC-η <sub>m</sub> (%)	17.52/17.40		17.78/17.65	
Power Tolerance (W)	(0,+4.99)			
Maximum System Voltage (V)	1000VDC / 1500VDC			
Maximum Series Fuse Rating (A)	20A			
Pmax Temperature Coefficient	-0.38%/°C			
Voc Temperature Coefficient	-0.28 %/°C			
Isc Temperature Coefficient	+0.05 %/°C			
Operating Temperature	-40~+85 °C			
Nominal Operating Cell Temperature	45±2 °C			

STC: Irradiance 1000 W/m<sup>2</sup> module temperature 25°C AM=1.5  
 NOCT: Irradiance 800 W/m<sup>2</sup> ambient temperature 20°C wind speed :1m/s Power measurement tolerance: +/-3%

**Curve**



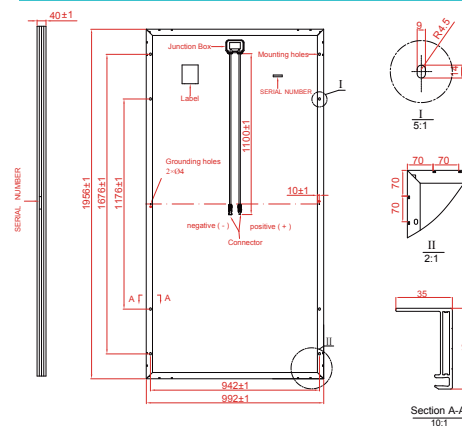
**Mechanical Specifications**

External Dimension	1956 x 992 x 40mm/1970 x 992 x 40mm
Weight	21.5kg/22.0kg
Solar Cells	Mono crystalline 156.75 x 156.75 mm (72pcs)
Front Glass	3.2 mm AR coating tempered glass, low iron
Frame	Anodized aluminium alloy
Junction Box	IP67
Output Cables	4.0 mm <sup>2</sup> , cable length:1100 mm
Connector	MC4 Compatible
Mechanical Load	5400 Pa

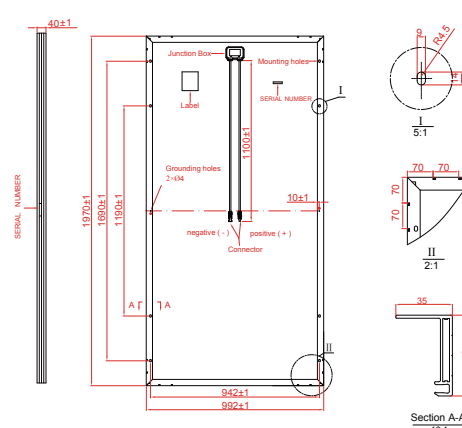
**Packing Configuration**

External Dimension	1956 x 992 x 40mm/1970 x 992 x 40mm	
Container	20'GP	40'GP
Pieces per Pallet	27	27
Pallets per Container	10	22
Pieces per Container	270	594

**Technical drawing**



**Technical drawing**



\* All Dimensions in mm.  
 \* The above drawing is a graphical representation of the product.  
 For engineering quality drawings please contact POWERWAVE.