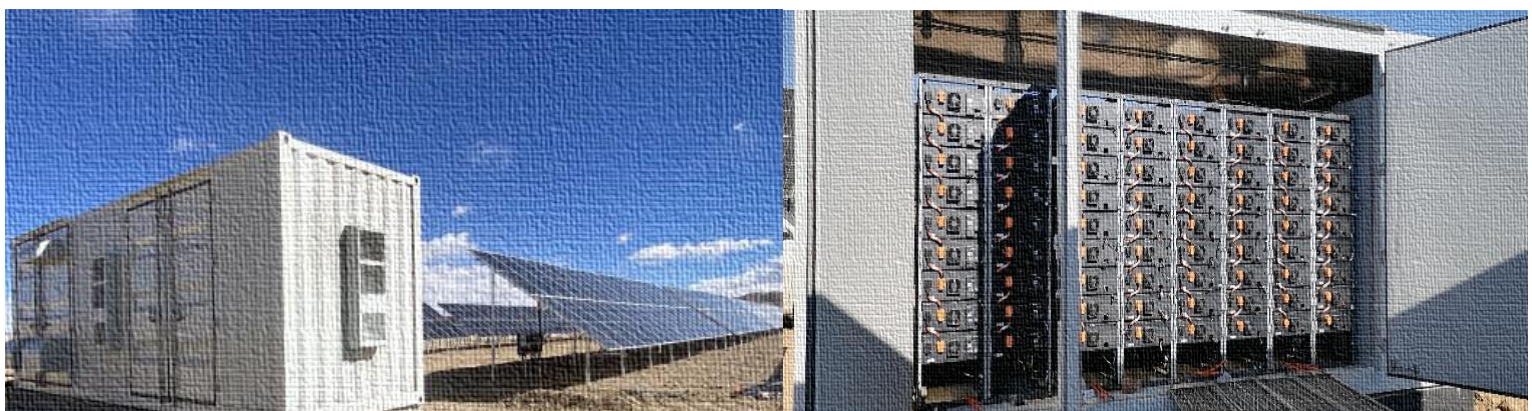




High Voltage LFP Battery System Solutions (Up to 1300Vdc)

Passion for Storage
and Green Energy



Application Scenarios*

Residential BESS



I&C BESS

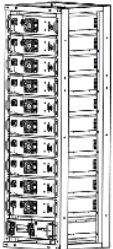
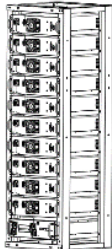
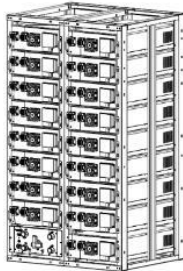
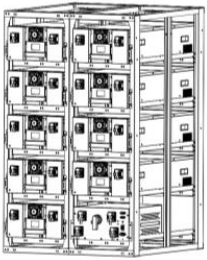
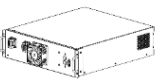

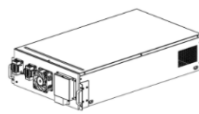
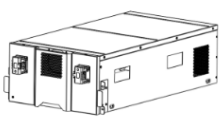


Utility BESS



* LFP Battery could be used in microgrids, V2G (Vehicle to Grid), UPS, etc.

Technical Parameters (HVC Series)

	Types (Vdc/Ah)	HVC 480/50	HVC 480/100	HVC 652.8/200	HVC 691/280
Cluster Info.	Appearances				
	Rated Voltage (Vdc)**	480	480	652.8	691.2
	Rated Capacity (kWh)	24	48	130.5	193.4
	Max. Discharge Current (A)	25 (0.5C)	50 (0.5C)	200 (1.0C)	140 (0.5C)
	Operating Voltage (Vdc)	375~540	375~540	510~734.4	540~777.6
	Qty. of Packs in Series	10	10	17	9
	Dimensions (mm)	550×620×1750	550×520×1750	1060×850×1870	1000×1050×1650
	Weight (kg)	Approx. 240	Approx. 442	Approx. 1230	Approx. 1800
	Qty. in Parallel	8			
	Operating Temp. (°C)	0 to 45			
	Optimum Temp. (°C)	15 to 30			
	Storage Temp. (°C)	-20 to +55			
	Relative Humidity (%)	5 to 95			
	Altitude (m)	0 to 4000 (Over 1000m adjusted for EN/IEC 62040-3)			
Communication Interfaces	RS485, Ethernet, CAN				
Communication Protocols	Modbus RTU, Modbus TCP, CAN2.0B				
Pack Info.	Rated Voltage/Capacity (Vdc/Ah)	48/50	48/100	38.4/200	76.8/280
	Dimensions (mm)	442×540×133	442×510×133	442×780×177	420×1060×230
	Appearances				
	Weight (kg)	Approx. 20	Approx. 40	Approx. 63	Approx. 175

** Voltage could be adjust by quantity of packs in series to be from 76.8V to 1300V.