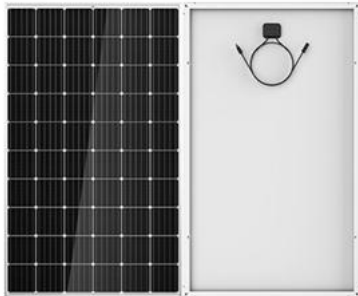


Solar cell module is the core part of the solar power supply system, and also the most valuable part of the solar power supply system. The function is to convert solar radiation energy into electricity, or send it to storage batteries, or directly promote load work.

RICH PV 60 conventional photovoltaic modules are a group of photovoltaic modules which are connected in series with 60 single solar cells to obtain high voltage, then output a certain rated output power and output voltage through a diode, and then encapsulated in stainless steel metal shell, installed with glass, filled with nitrogen, and sealed.

60 pcs Solar Module



Performance advantages

- High efficiency solar cell, high conversion efficiency
- Output power 100% positive tolerance (0, +3W)
- Wind pressure, snow pressure bearing capacity

Quality assurance

- Solar module's Life Guarantee for 25 Years
- 10-year guaranteed attenuation rate less than 10%
- 25-year guaranteed attenuation rate less than 20%



Excellent production process

- Surface with sude glass to increase the incidence of sunlight
- The frame is made of hard aluminium alloy, which can effectively guarantee the use for more than 5 years
- Add anti-aging and anti-ultraviolet radiation agent to junction box, Ensure that no aging and rupture occurs in outdoor use for more than 25 years

Certification

ISO 9001:2015 ISO 14001:2015
IEC 61215 IEC 61730
TUV UL VDE CQC CE

Polycrystalline solar module

■ Appearance Parameters	
Solar cell model	poly solar cell 156.75mm×156.75mm
Quantity of solar cell	60 (6*10)
Size	1640*992*40mm
Connection box	IP67
Wires and connectors	0.9M 4mm ² and MC4 connector
Maximum affordable wind pressure	60m/s N/m ² or maximum km/h



■Electrical performance parameters

Module	NC-265P-60	NC-270P-60	NC-275P-60	NC-280P-60	NC-285P-60
Rated power	265W	270W	275W	280W	285W
Power tolerance	-0%~+3%	-0%~+3%	-0%~+3%	-0%~+3%	-0%~+3%
Maximum operating voltage	30.7V	31.1V	31.4V	31.7V	32.0V
Maximum operating current	8.63A	8.68A	8.76A	8.84A	8.91A
Open circuit voltage	38.1V	38.3V	38.5V	38.7V	38.9V
short-circuit current	9.11A	9.17A	9.23A	9.29A	9.35A
work environment	-40°C~+85°C				
Maximum system voltage	1000VDC (It can be customized to 1500VDC as required)				
Maximum insurance rating	15A				
Testing environment	Radiance 1000W/m ² , Module temperature 25C°				

Current-Voltage & Power-Voltage Curve

