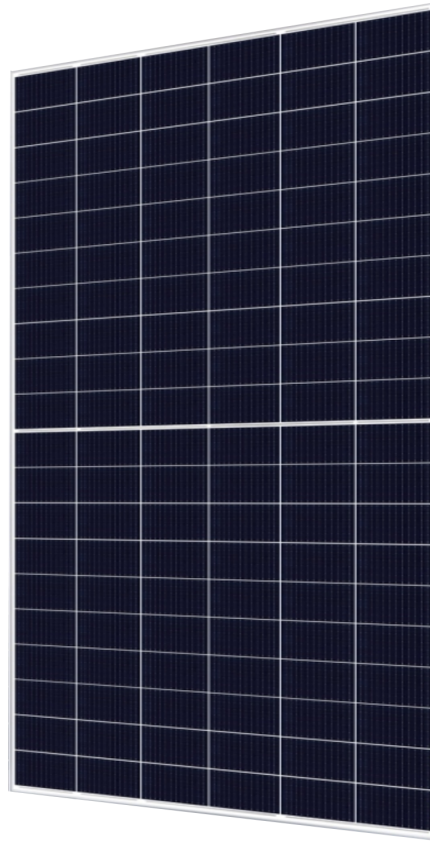


JUSTSOLAR

Halfcut 210mm

MONO MODULE

JST210*210-M-60-MH-
(580-600)W



High conversion efficiency
High module efficiency to guarantee power output.



Self-cleaning glass
Coating glass for self-cleaning, reduce surface dust.



Outstanding low irradiation performance
Excellent module efficiency even in the weak light conditions, such as morning or cloudy.



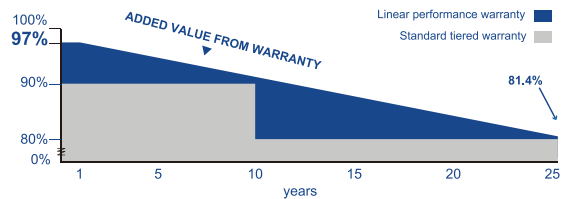
Excellent loading capability
2400Pa wind loads, 5400Pa snow loads.



0 to +5W positive tolerance
Detailed information in Electrical Specifications.



48-hour response service



25

25-year performance warranty

10

10-year warranty on materials and workmanship

IEC 61215 Ed.2
IEC 61730
UL 1703



JUST Solar

ELECTRICAL DATA

Model Type (JST210*210-M-60-MH-***W)	580	585	590	595	600
Peak Power (Pmax)	580W	585W	590W	595W	600W
Module Efficiency	20.5%	20.7%	20.8%	21.0%	21.2%
Maximum Power Voltage (Vmp)	34.04V	34.22V	34.42V	34.60V	34.80V
Maximum Power Current (Imp)	17.05A	17.10A	17.15A	17.20A	17.25A
Open Circuit Voltage (Voc)	40.90V	41.10V	41.30V	41.50V	41.70V
Short Circuit Current (Isc)	18.06A	18.11A	18.16A	18.21A	18.26A
Power Tolerance			0 to +5W		
Maximum System Voltage Nominal			1500V		
Operating Cell Temperature Maximum			44.4±2°C		
Series Fuse Rating			35A		

MECHANICAL DATA

Cell Type	210mm, Mono
Number of Cells	120(10×6×2)
Weight	35kg
Dimension	2172×1303×35mm
Max Load	5400 Pascals
Junction Box	IP68 rated
Connector	MC4 Compatible
Wire Type	PV Wire

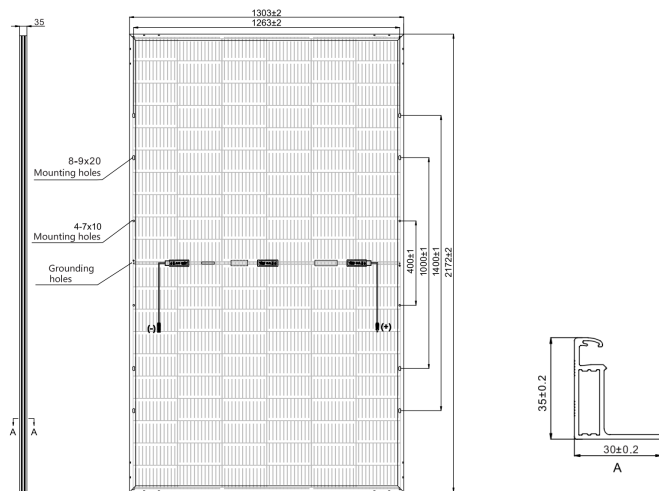
TEMPERATURE CHARACTERISTICS

Temp. Coeff. of Isc (TK Isc)	0.04% /°C
Temp. Coeff. of Voc (TK Voc)	-0.25% /°C
Temp. Coeff. of Pmax (TK Pmax)	-0.34% /°C

PACKING MANNER

Container	40' HQ
Pieces per Pallet	31
Pieces per Container	527

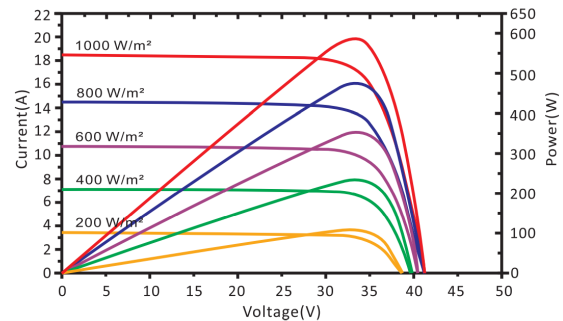
PHYSICAL CHARACTERISTICS



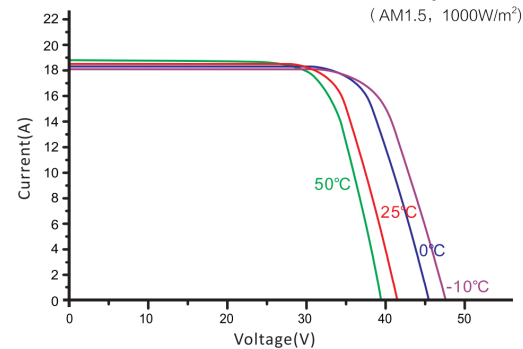
ELECTRICAL CHARACTERISTICS

JST210*210-M-60-MH-590W

I-V characteristics at different irradiances



I-V characteristics at different temperatures



Note: the specifications are obtained under the Standard Test Conditions (STCs): 1000W/m² solar irradiance, 1.5 Air Mass, and cell temperature of 25°C. The NOCT is obtained under the Test Conditions: 800W/m², 20°C ambient temperature, 1m/s wind speed, AM 1.5 spectrum.
Please contact support@jusolar.com for technical support. The actual transactions will be subject to the contracts. This parameters is for reference only and it is not a part of the contracts. The specifications are subject to change without prior notice.