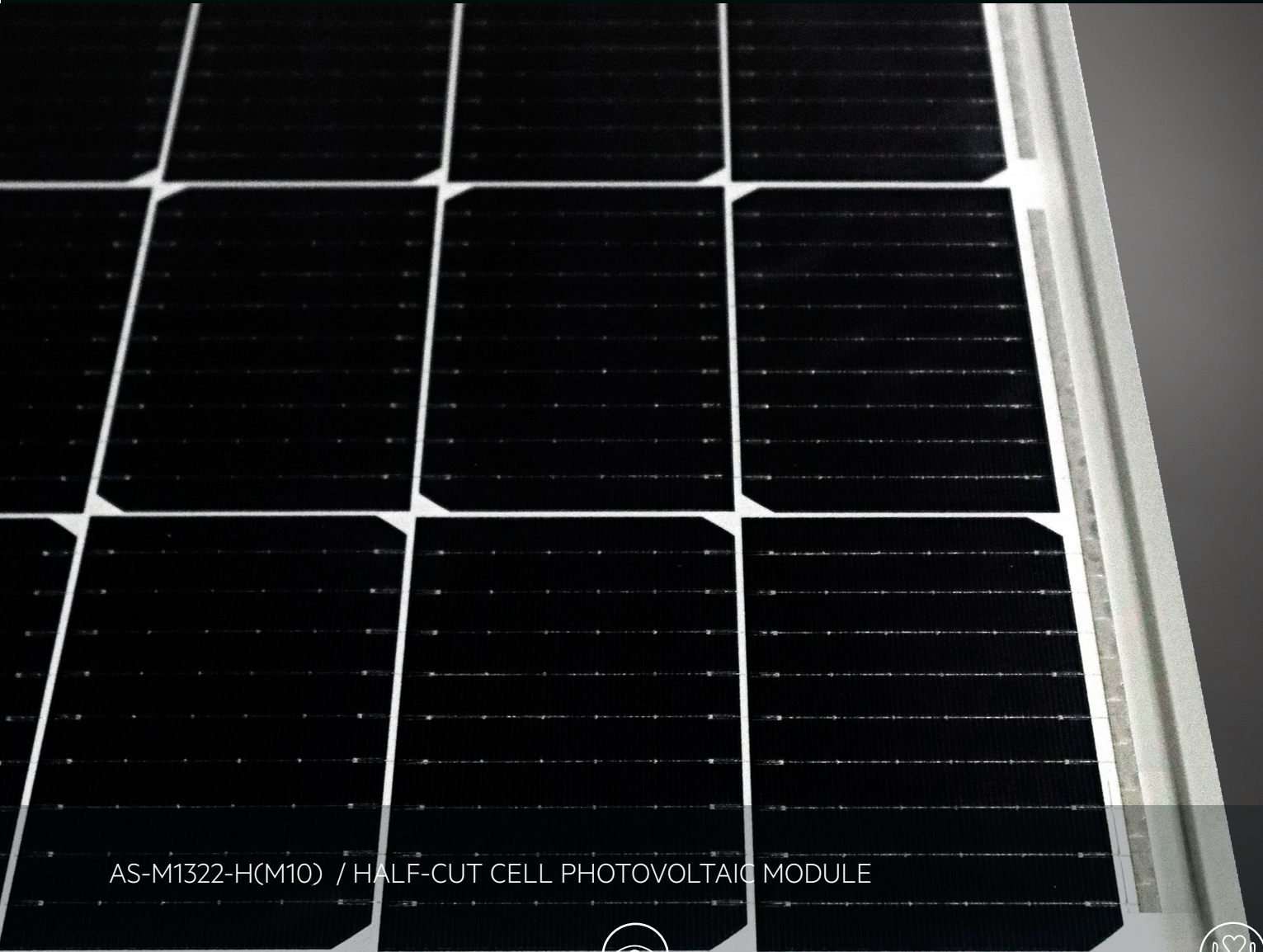




AEG HIGH EFFICIENCY SERIES



AS-M1322-H(M10) / HALF-CUT CELL PHOTOVOLTAIC MODULE

Characteristics

Power range: 495-505 Wp
Half-Cut cell technology
Suitable for: residential / commercial installations



Extra peace of mind

Extensive certifications and rigorous Quality Control
15 years product warranty
25 years performance warranty



Product Name Code (PNC)

AS-M1322-H(M10)-495/500/505 (silver frame)
AS-M1322Z-H(M10)-495/500/505 (black frame)



Advantages

Optimized design for more energy output
Maximized efficiency thanks to M10 cells
Extra long cables for greater installation flexibility



AS-M1322-H(M10) / HALF-CUT CELL PHOTOVOLTAIC MODULE

PRODUCT SERIES & NAMECODE (PNC)	
AEG HIGH EFFICIENCY SERIES	
AS-M1322-H(M10)-495/500/505, silver frame	
AS-M1322Z-H(M10)-495/500/505, black frame	

ELECTRICAL CHARACTERISTICS AT STC ^{1,2}				
Nominal Power (Pmax)	[Wp]	495	500	505
Power Sorting ³	[W]	0-5	0-5	0-5
Maximum Power Voltage (Vmp)	[V]	37.68	37.84	38.01
Maximum Power Current (Imp)	[A]	13.14	13.22	13.29
Open Circuit Voltage (Voc)	[V]	45.46	45.60	45.73
Short Circuit Current (Isc)	[A]	13.99	14.07	14.14
Module Efficiency (ηm)	[%]	20.85	21.06	21.27
Maximum System Voltage	[V]	1000	1000	1000
Series Fuse Maximum Rating	[A]	25	25	25

ELECTRICAL CHARACTERISTICS AT NMOT ⁴				
Maximum Power (Pmax)	[W]	375	379	383
Maximum Power Voltage (Vmp)	[V]	36.02	36.17	36.34
Maximum Power Current (Imp)	[A]	10.42	10.48	10.54
Open Circuit Voltage (Voc)	[V]	43.18	43.31	43.44
Short Circuit Current (Isc)	[A]	11.22	11.29	11.34

MECHANICAL CHARACTERISTICS		
Solar cells	monocrystalline [pcs]	132
	Dimensions [mm]	M10 Half-cut [182 x 91]
Front glass	high-transparency	
	Thickness [mm] / [in]	3.2 / 0.126
Backsheet	White	
Encapsulant	EVA	
Frame	Anodized aluminum alloy	Silver or black
	Split-type, IP68	
Junction box	Bypass diodes	3
	Length [mm] / [in]	1300 / 51.18
UV-resistant cables	Section [mm ²]	4
Connectors	MC4	
Dimensions	H x L x W [mm]	2094 x 1134 x 35
	H x L x W [in]	82.44 x 44.65 x 1.38
Weight	[kg] / [lbs]	26 / 57.32
Maximum load	Wind / Snow [Pa]	2400 / 5400
Fire Class	Class C	

PACKAGING		
Packing configuration	[pcs/pallet]	31
Loading capacity	[pcs/40 ft container]	682

NOTES
1-Standard Test Conditions (STC): Irradiance 1000 W/m ² , Air Mass AM = 1.5, Cell Temperature 25°C
2-Measurement tolerances (IEC 61215:2016):Pmax±3%, Voc±3%, Isc±4%
3-AEG photovoltaic modules are classified according to a principle of positive power tolerance: the Power Output measured at STC of the delivered modules exceeds their assigned Nameplate Nominal Power
4-NMOT: Nominal operating temperature of module, Irradiance 800 W/m ² , Wind Speed 1m/s; Ambient Temperature 20°C, Air Mass AM=1.5
5-Full text of the Warranty Terms available at: www.aeg-industrialsolar.de . If not offered by your distributor, the standard warranty conditions apply.
6-(HE/GB) No less than 98% of the minimum "Peak Power at STC" in the first year; power output decline no more than 0.55% per year thereafter, ending with 84.8%.
Dimensions in the technical picture are expressed in mm with tolerance ±2 mm (±0.079 ") / Version 2022.11.V1.EN © Solar Solutions Group. Specifications in this datasheet are subject to change without notice.
AEG is a registered trademark used under license from AB Electrolux (publ).

CERTIFICATIONS		
System	ISO 9001, ISO 14001, ISO 45001	
Product	IEC 61215-1:2016; IEC 61215-1:2016; IEC 61215-2:2016; IEC 61730-1:2016; IEC 61730-2:2016; EN 61215-1:2016; EN 61215-1:2016; EN 61215-2:2017; EN IEC 61730-1:2018; EN IEC 61730-1:2018/AC:2018-06; EN IEC 61730-2:2018; EN IEC 61730-2:2018/AC:2018-06	

WARRANTIES		
Product warranty ⁵	[years]	15
Performance warranty (linear) ⁶	[years]	25

TEMPERATURE CHARACTERISTICS		
NMOT	[°C]	42 (±3)
Pmax Temp. Coefficient (γ)	[%/°C]	-0.330
Voc Temp. Coefficient (β)	[%/°C]	-0.246
Isc Temp. Coefficient (α)	[%/°C]	0.0448
Operating temperature	[°C]	-40~+85

