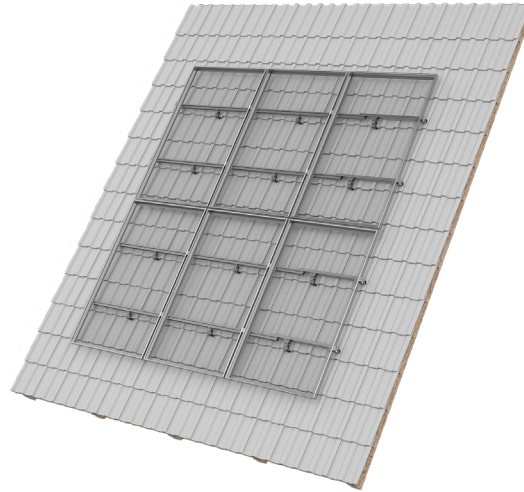




mounting  
systems



## Pitched ProLine

|  |   |
|--|---|
| <b>Application</b>                         | On roof   |
| <b>Roof cladding</b>                       | Suitable for most types of roof cladding                          |
| <b>Roof slope</b>                          | Up to 60°   |
| <b>Building height</b>                     | Up to 20 m  |
| <b>PV modules</b>                          | Framed, frameless   |
| <b>Module orientation</b>                  | Portrait, landscape   |
| <b>Distance between roof fixing points</b> | Up to 2m Standard<br>(further distance possible on request)       |
| <b>Supporting profiles</b>                 | Extruded Aluminium (EN AW 6063 T66)                               |
| <b>Hooks, small parts</b>                  | Stainless steel (V2A), Aluminium                                  |
| <b>Colour</b>                              | Aluminium: plate finish;<br>Visible components available in black |
| <b>Certificates</b>                        | MCS 010, MCS 012<br>CE Marked – EN 1090-2/3                       |
| <b>Warranty</b>                            | 10 years  |



On-Roof



Framed Module



Frameless Modul



Orientation  
Portrait



Orientation  
Landscape



Double Roman  
Tiles



Slate



Plain Tiles



Corrugated Metal



Bitumen Shingels



Standing Seam



Double Roman Tiles



Standing Seam



Plain Tiles



Corrugated