



Worldwide Network



Clenergy PV-ezRack SolarTerrace III-F Brochure 202002

Clenergy Australia

1/10 Duerdin Street, Clayton VIC 3168 Australia
Tel: +61 3 9239 8088 Fax: +61 3 9239 8024
E-mail: sales@clenergy.com.au www.clenergy.com.au

Clenergy China

999-1009 Min'an Rd, Huoju Hi-tech Ind. Dev. Zone
Xiang'an District 361101, Xiamen, Fujian, China
Tel: +86 592 311 0088 Fax: +86 592 599 5028
E-mail: sales@clenergy.com.cn www.clenergy.com.cn

Clenergy EMEA

Esplanade 41, 20354 Hamburg, Germany
Tel: +49 (0) 40 3562 389 00
E-mail: sales.emea@clenergy.com

Clenergy Japan

Nittochi Yamashita Building 5th Floor
23 Yamashita-cho, Yokohama, 231-0023 Japan
Tel: +81 45 228 8226 Fax: +81 45 228 8316
E-mail: sales@clenergy.co.jp www.clenergy.jp

Clenergy Philippines

145 Yakal St., San Antonio village, Makati City, Philippines
Tel: +63 977 8407240
E-mail: sales_ph@clenergy.com www.clenergy.ph

Clenergy Thailand

9/2, 5th Floor, Vorasin Building, Soi Yasooob 2, Viphavadee-Rungsit Road, Chomphon Sub-district, Chatuchak District, Bangkok 10900
Tel: +66 63 228 0200, +66 81 969 5152
E-mail: sales_th@clenergy.com, support_th@clenergy.com

Clenergy Singapore

24 Raffles Place #28-01 Clifford Centre Singapore 048621
Tel: +65 9743 1425
E-mail: vincent.chan@clenergy.com

Clenergy Vietnam

Tel: +86 592 3110095
E-mail: sales_vietnam@clenergy.com;
susie.chen@clenergy.com;
ducnguyen@clenergy.com



PV-ezRack SolarTerrace III-F

Universal ground mount frame for corrosive environments and for tough soil conditions



PV-ezRack SolarTerrace III-F

Universal ground mount frame for corrosive environments and for tough soil conditions

Manufactured from high quality structural grade and anodised aluminium, PV-ezRack SolarTerrace III-F is the perfect mounting solution for corrosive environments. The support legs can be installed either with concrete ballast footing or on ground screws which makes it suitable for almost every soil condition. Its user friendly high level of prefabrication makes it easy to install and therefore practical for smaller commercial and even for residential installations.

Key Benefits

Durable even in harsh environments

STIII-F contains only 6005 Aluminium alloy and 304 stainless steel (316 on request), which makes it suitable for even the toughest environments, such as corrosive sites close to coastlines.

Support leg is delivered in one piece

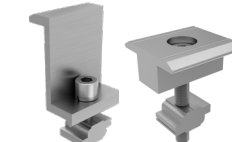
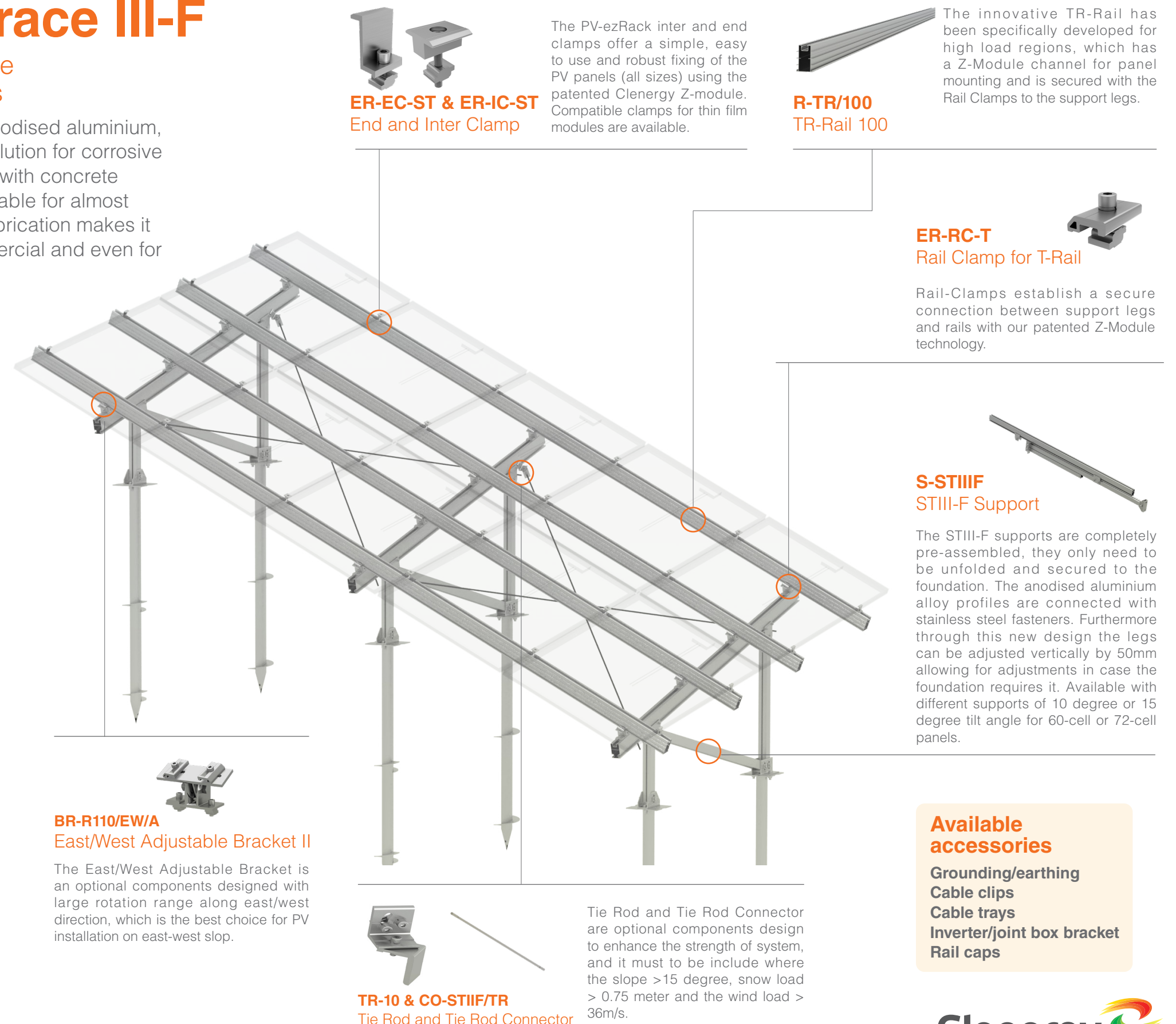
The support legs of the STIII-F are completely pre-assembled, they only needed to be opened up and secured to the foundation. They even have the positioning rail clamps pre-installed, so you don't need to measure and mark the rail positions anymore. The combination of these features is saving valuable time in assembly and logistics, making it one of the fastest system on the market.

Suitable for all soil and ground types

The support legs can be installed either with a concrete ballast footing or with ground screws. This makes STIII-F suitable for the most challenging soil conditions where ramming is not possible.



*see Clenergy PV-ezRack warranty for further details



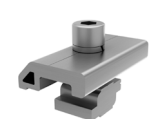
ER-EC-ST & ER-IC-ST
End and Inter Clamp

The PV-ezRack inter and end clamps offer a simple, easy to use and robust fixing of the PV panels (all sizes) using the patented Clenergy Z-module. Compatible clamps for thin film modules are available.



R-TR/100
TR-Rail 100

The innovative TR-Rail has been specifically developed for high load regions, which has a Z-Module channel for panel mounting and is secured with the Rail Clamps to the support legs.



ER-RC-T
Rail Clamp for T-Rail

Rail-Clamps establish a secure connection between support legs and rails with our patented Z-Module technology.



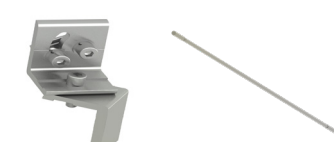
S-STIIF
STIII-F Support

The STIII-F supports are completely pre-assembled, they only need to be unfolded and secured to the foundation. The anodised aluminium alloy profiles are connected with stainless steel fasteners. Furthermore through this new design the legs can be adjusted vertically by 50mm allowing for adjustments in case the foundation requires it. Available with different supports of 10 degree or 15 degree tilt angle for 60-cell or 72-cell panels.



BR-R110/EW/A
East/West Adjustable Bracket II

The East/West Adjustable Bracket is an optional components designed with large rotation range along east/west direction, which is the best choice for PV installation on east-west slop.



TR-10 & CO-STIIF/TR
Tie Rod and Tie Rod Connector

Tie Rod and Tie Rod Connector are optional components design to enhance the strength of system, and it must to be include where the slope >15 degree, snow load > 0.75 meter and the wind load > 36m/s.

Available accessories

Grounding/earthing
Cable clips
Cable trays
Inverter/joint box bracket
Rail caps

Clenergy
Innovating renewable energy