

TWO-RAM BALERS



www.harrisequip.com

HARRIS EQUIPMENT-CORDELE
315 W. 12TH AVE
CORDELE, GA 31015
800.468.5657
229.273.2500

HARRIS EQUIPMENT-BAXLEY
340 JEKYL RD
BAXLEY, GA 31513
800.447.3526
912.367.4661

HARRIS EQUIPMENT -
UNITED KINGDOM OFFICE
UNIT D2 FORMAL INDUSTRIAL PARK
NORTHWAY LANE
TEWKESBURY GLOS GL20 8GY
+44 (0) 1684-254980
info.europe@harrisequip.com



TWO-RAM BALERS



IMITATED, BUT NEVER EQUALED.



Harris offers the industry's finest customer service, most advanced design and engineering capabilities. For more than 100 years, Harris has remained an industry leader in the manufacturing of ferrous and non-ferrous processing equipment. Our equipment is backed by a well-trained, worldwide distribution organization, supported by a large staff of factory technicians, and large parts inventories at both distributor sites and the manufacturing plants.

COMBO DOOR

In case of oversize bales, the door can open additional 7" to safely eject oversized bale

OPEN



CLOSED



"Combo Door" closed, fully encloses baling chamber for difficult to contain materials. Helps eliminate bale contamination when changing material grades being baled. Maximizes bale weights.

SMART KNIFE SYSTEM™

STRAIGHT (4TURNS)



"Smart Knife" System. For adjusting the distance between the main ram blade and the fixed knife. No Blade Shimming. Easy to adjust and maintain blade gap.

SERRATED (2TURNS)



Rake angle knife beam for more efficient shearing capability. Allows the baler's rated shearing force to be utilized across the angle for scissor like efficiency.*

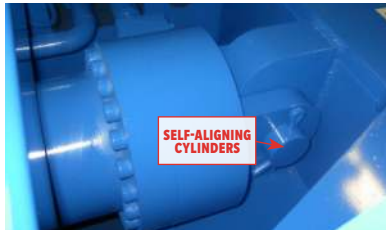
PRE-COMPRESSION LID™

"When it comes to production rate and thru-put no other competitor comes close to the two-ram with its exclusive Pre-Compression Lid™



1. Reduces Electrical Costs
2. Extends the life of liners
3. Eliminates shearing and hydraulic shock
4. allow for successful baling without jams

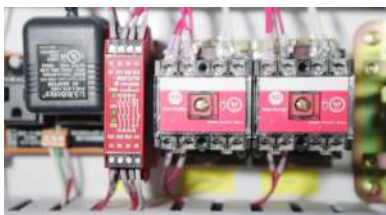
CLEVIS & PIN MOUNTED CYLINDERS



CONTROL SYSTEM & DISPLAY



CATEGORY 3 SAFETY MONITORING SYSTEM



FLOODED SUCTION



Flooded Suction tanks guarantee pump priming. No more dry start-ups, after idle time, which increases pump life. Electrical sensors assure suction shut-off valves are completely open before the motor can start-up.

LINERS



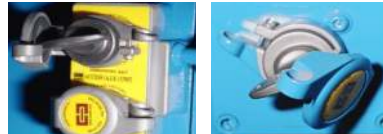
Floor and side liners AR450-500 with ribbed tongue and grooved wear liners. No shim Hold-down adjustment bars.

LOWER MAIN RAM WIPER



The lower main ram wiper (shown here on a centurion HRB baler) is a reversible blade at the bottom of the main ram to minimize material migration under the ram. Reduces Main Ram jams

TRAPPED KEY HOPPER ACCESS DOOR INTERLOCKS



COMPACT TWO RAMS

Affordable, durable, two-ram balers w/a small footprint, perfect for operations that don't require high production volumes, but still require multi-product versatility, low labor cost, provided by the traditional ram-ram baler with automatic strapping. Great for baling ONP, OCC, PET, HDPE, Film, Electronic Scrap, Non Ferrous metals.



WOLVERINE

TRHE 750-50

TRHE 843-50

NARROW BOX TWO RAMS

These narrow box, multi-purpose two rams provide quality, efficiency and reliability at an economical price. They produce high density bales with one of the highest baling forces in its class. Process ONP, OCC, High grade paper, MSW, PET, HDPE, Film, Electronic Scrap, White goods, Non Ferrous metals.



BADGER L50S-2 SERIES

BADGER L75S-2 SERIES

BADGER L150-4 SERIES

BADGER L125S-2&4 SERIES

***TRHE 852 SERIES**

***TRHE 952 SERIES**

*Badger, Gorilla and Centurion models only.

*These models have optional Pre Compression Lid

WIDE BOX TWO RAMS

This baler provides dense bales and high throughputs at an economical price for a variety of materials (ONP, OCC, MSW, PET, HDPE, Film, White goods, Electronic Scrap, Non Ferrous metals, RDF). The Gorilla is designed for easy operation and simple maintenance. It is available with a 12" or 13" main cylinder.



GORILLA 100S-2 SERIES
GORILLA 100S-4 SERIES

GORILLA 150S-4 SERIES

GORILLA 200T SERIES

HRB TWO RAMS (MULTIPLE MATERIALS)

Harris HRB Centurion™ is a multi-purpose baler providing the quality, efficiency and reliability that extends the Harris tradition. The high efficiency, flooded pump suction, hydraulic power unit combined with a Harris 13" (330 mm) bore main cylinder, give you the highest densities and fastest throughput in its class. Materials such as ONP, OCC, High Grade Paper, PET, HDPE, Film, Steel & Aluminum Cans, White Goods and Non-Ferrous Metals



CENTURION SERIES

HRB 240 SERIES

**HRB 1035W-BR/
BD-200T SERIES**

PRE COMPRESSION WIDE BOX TWO RAMS

The TR 1270, 1288 & 1388 provides all the features as our other wide box two rams with the exception that these have the available option of the Pre Compression Lid. No other competitor comes close to this feature.

The TRBT "Bales & Ties Simultaneously with the highest thru put. 100% Ram penetration, with the Patented Pre Compression Lid. No Operator required plus up to twice the thru-put on materials such as PET, HDPE and Aluminum cans.



TR 1270 SERIES
TR 1288 SERIES

TR 1388B SERIES
TRBT 1388 SERIES

TRHE 1188 SERIES

HRB TWO RAMS (SOLID WASTE)

Especially designed for the MSW, the HRB-Solid Waste baler is perfect for transfer stations and landfills. By producing large bales, the HRB-Solid Waste Baler high production allow you to handle less bales, increase payloads into your transfer trailer to decrease transfer/transportation costs. By baling your MSW at the landfill, you increase cell density, decrease landfill compaction equipment costs, and decrease daily cover costs.



HRB 1445W-200T

HRB 1445W-300T

HRB 1545W-300T

TWO-RAM BALERS SPECIES

		MAIN MOTOR	CHARGE BOX OPENING WIDTH	BALE SIZE	CYLINDER SIZE	TONS OF FORCE*	RAM FACE PRESSURE	CYCLE TIME NO LOAD MAIN CYLINDER	PRODUCTION TPH OCC OR MSW
COMPACT TWO RAMS		WIDTH X LENGTH		WIDTH X HEIGHT X LENGTH					
	Wolverine	40 hp (29.42 kw)	41"x60" (1041x1524 mm)	46"x31"x61" (1168x787x1549 mm)	8" bore (203 mm)	88 tons (80 MT)	145 psi (10 bar)	22	up to 8.6 OCC
	TRHE 750-50	50 hp (37 kw)	60"x50" (1524x1270 mm)	45"x31"x64" (1143x787x1626 mm)	7" bore (178 mm)	77 tons (70 MT)	126 psi (8.7 bar)	18	up to 5 OCC
	TRHE 843-50	50 hp (37 kw)	40"x62" (1016x1575 mm)	45"x31"x64" (1143x787x1626 mm)	8" bore (203 mm)	116 tons (105 MT)	192 psi (13.2 bar)	20	up to 7 OCC
NARROW BOX TWO RAMS									
BADGER	L 50S-2 10/8	50 hp (37 kw)	42"x85" (1067x2159 mm)	46"x31"x61" (1168x787x1549 mm)	10" bore (254 mm)	137 tons (124 MT)	239 psi (16.5 bar)	24	up to 8 OCC
	L 50S-2 11/8	50 hp (37 kw)	42"x85" (1067x2159 mm)	46"x31"x61" (1168x787x1549 mm)	11" bore (279 mm)	166 tons (151 MT)	288 psi (19.9 bar)	29	up to 6.4 OCC
	L 75S-2 10/8	75 hp (56 kw)	42"x85" (1067x2159 mm)	46"x31"x61" (1168x787x1549 mm)	10" bore (254 mm)	137 tons (124 MT)	239 psi (16.5 bar)	20	up to 10 OCC
	L 75S-2 11/8	75 hp (56 kw)	42"x85" (1067x2159 mm)	46"x31"x61" (1168x787x1549 mm)	11" bore (279 mm)	166 tons (151 MT)	288 psi (19.9 bar)	25	up to 8 OCC
	LT50-4 10/8	2 x 50 hp (2 x 37 kw)	42"x85" (1067x2159 mm)	46"x31"x61" (1168x787x1549 mm)	10" bore (254 mm)	137 tons (124 MT)	239 psi (16.5 bar)	18	up to 13 OCC
	LT50-4 11/8	2 x 50 hp (2 x 37 kw)	42"x85" (1067x2159 mm)	46"x31"x61" (1168x787x1549 mm)	11" bore (279 mm)	166 tons (151 MT)	288 psi (19.9 bar)	21	up to 9.4 OCC
	L 125S-2 10/8	125 hp (94 kw)	42"x85" (1067x2159 mm)	46"x31"x61" (1168x787x1549 mm)	10" bore (254 mm)	137 tons (124 MT)	239 psi (16.5 bar)	18	up to 13 OCC
	L 125S-2 11/8	125 hp (94 kw)	42"x85" (1067x2159 mm)	46"x31"x61" (1168x787x1549 mm)	11" bore (279 mm)	166 tons (151 MT)	288 psi (19.9 bar)	21	up to 9.4 OCC
	L 125S-4 10/8	125 hp (94 kw)	42"x85" (1067x2159 mm)	46"x31"x61" (1168x787x1549 mm)	10" bore (254 mm)	137 tons (124 MT)	239 psi (16.5 bar)	10	up to 19 OCC
	L 125S-4 11/8	125 hp (94 kw)	42"x85" (1067x2159 mm)	46"x31"x61" (1168x787x1549 mm)	11" bore (279 mm)	166 tons (151 MT)	288 psi (19.9 bar)	12	up to 15 OCC
	*TRHE 852-50	50 hp (37 kw)	40"x72" (1016x1829 mm)	45"x31"x64" (1143x787x1626 mm)	8" bore (203 mm)	126 tons (114 MT)	214 psi (14.7 bar)	20	up to 8 OCC
	*TRHE 852-100	2 x 50 hp (2 x 37 kw)	40"x72" (1016x1829 mm)	45"x31"x64" (1143x787x1626 mm)	8" bore (203 mm)	126 tons (114 MT)	214 psi (14.7 bar)	12	up to 14 OCC
	*TRHE 952-50	50 hp (37 kw)	40"x72" (1016x1829 mm)	45"x31"x64" (1143x787x1626 mm)	9" bore (229 mm)	159 tons (144 MT)	264 psi (18.2 bar)	28	up to 6 OCC
*TRHE 952-100	2 x 50 hp (2 x 37 kw)	40"x72" (1016x1829 mm)	45"x31"x64" (1143x787x1626 mm)	9" bore (229 mm)	159 tons (144 MT)	264 psi (18.2 bar)	15	up to 12 OCC	
<i>*These models have optional Pre Compression Lid</i>									
WIDE BOX TWO RAMS									
GORILLA	100S-2 12/9	100 hp (75 kw)	58"x105" (1473x2667 mm)	45"x31"x63" (1143x787x1600 mm)	12" bore (305 mm)	198 tons (180 MT)	236 psi (16.3 bar)	27	up to 16 OCC
	100S-2 13/9	100 hp (75 kw)	58"x105" (1473x2667 mm)	45"x31"x63" (1143x787x1600 mm)	13" bore (330 mm)	232 tons (210 MT)	277 psi (19.1 bar)	32	up to 13 OCC
	100S-4 12/9	100 hp (75 kw)	58"x105" (1473x2667 mm)	45"x31"x63" (1143x787x1600 mm)	12" bore (305 mm)	198 tons (180 MT)	236 psi (16.3 bar)	14	up to 21 OCC
	100S-4 13/9	100 hp (75 kw)	58"x105" (1473x2667 mm)	45"x31"x63" (1143x787x1600 mm)	13" bore (330 mm)	232 tons (210 MT)	277 psi (19.1 bar)	15	up to 18 OCC
	150S-4 12/9	150 hp (112 kw)	58"x105" (1473x2667 mm)	45"x31"x63" (1143x787x1600 mm)	12" bore (305 mm)	198 tons (180 MT)	236 psi (16.3 bar)	13	up to 24 OCC
	150S-4 13/9	150 hp (112 kw)	58"x105" (1473x2667 mm)	45"x31"x63" (1143x787x1600 mm)	13" bore (330 mm)	232 tons (210 MT)	277 psi (19.1 bar)	15	up to 20 OCC
	200T 12/9	2x100 hp (2x75 kw)	58"x105" (1473x2667 mm)	45"x31"x63" (1143x787x1600 mm)	12" bore (305 mm)	198 tons (180 MT)	236 psi (16.3 bar)	10	up to 31 OCC
	200T 13/9	2x100 hp (2x75 kw)	58"x105" (1473x2667 mm)	45"x31"x63" (1143x787x1600 mm)	13" bore (330 mm)	232 tons (210 MT)	277 psi (19.1 bar)	10	up to 27 OCC
PRECOMPRESSION LID WIDE BOX TWO RAMS									
	TR 1270-75-S2	75 hp (56 kw)	57"x72" (1448x1829 mm)	45"x31"x64" (1143x787x1626 mm)	12" bore (305 mm)	198 tons (180 MT)	235 psi (16.2 bar)	30	up to 9 OCC
	TR 1270-100-S4	100 hp (75 kw)	57"x72" (1448x1829 mm)	45"x31"x64" (1143x787x1626 mm)	12" bore (305 mm)	198 tons (180 MT)	235 psi (16.2 bar)	15	up to 15 OCC
	TR 1270-150-S6	2x75 hp (2x56 kw)	57"x72" (1448x1829 mm)	45"x31"x64" (1143x787x1626 mm)	12" bore (305 mm)	198 tons (180 MT)	235 psi (16.2 bar)	12	up to 17 OCC
	TR 1288-100-S4	100 hp (75 kw)	60"x90" (1524x2286 mm)	45"x31"x64" (1143x787x1626 mm)	12" bore (305 mm)	198 tons (180 MT)	235 psi (16.2 bar)	16	up to 18 OCC
	TR 1388B-100-S4	100 hp (75 kw)	57"x90" (1448x2286 mm)	45"x31"x64" (1143x787x1626 mm)	13" bore (330 mm)	232 tons (210 MT)	276 psi (19.0 bar)	18	up to 16 OCC
	TR 1388B-150-S6	2x75 hp (2x56 kw)	57"x90" (1448x2286 mm)	45"x31"x64" (1143x787x1626 mm)	13" bore (330 mm)	232 tons (210 MT)	276 psi (19.0 bar)	15	up to 18 OCC
	TR 1388B-200-S8	2x100 hp (2x75 kw)	57"x90" (1448x2286 mm)	45"x31"x64" (1143x787x1626 mm)	13" bore (330 mm)	232 tons (210 MT)	276 psi (19.0 bar)	10	up to 25 OCC
	TRBT 1388-200-S8	2x100 hp (2x75 kw)	57"x90" (1448x2286 mm)	45"x31"x64" (1143x787x1626 mm)	13" bore (330 mm)	232 tons (210 MT)	276 psi (19.0 bar)	11	up to 29 OCC
	TRHE 1188-100-S2	2 x 50 hp (2 x 37 kw)	60"x90" (1524x2286 mm)	45"x31"x64" (1143x787x1626 mm)	11" bore (279 mm)	237 tons (215 MT)	283 psi (19.5 bar)	20	up to 16 OCC
	TRHE 1188-200-S4	2x100 hp (2x75 kw)	60"x90" (1524x2286 mm)	45"x31"x64" (1143x787x1626 mm)	11" bore (279 mm)	237 tons (215 MT)	283 psi (19.5 bar)	11	up to 25 OCC
HRB TWO RAMS (MULTIPLE MATERIALS)									
	Centurion 150	150 hp (112 kw)	57.5"x105.5" (1461x2680 mm)	45"x31"x64" (1143x787x1626 mm)	13" bore (330 mm)	232 tons (210 MT)	281 psi (19.4 bar)	15	up to 35 OCC
	Centurion 200T	2x100 hp (2x75 kw)	57.5"x105.5" (1461x2680 mm)	45"x31"x64" (1143x787x1626 mm)	13" bore (330 mm)	232 tons (210 MT)	281 psi (19.4 bar)	10	up to 42 OCC
	HRB 240	2x100 hp (2x75 kw)	58"x101" (1473x2565 mm)	45"x30"x66" (1143x762x1676 mm)	11" bore (279 mm)	238 tons (216 MT)	283 psi (19.5 bar)	11	up to 32 OCC
	HRB 1035W-BR/BD-200T	2x100 hp (2x75 kw)	57"x110" (1448x2794 mm)	45"x31"x64" (1143x787x1626 mm)	16" bore (406 mm)	352 tons (319 MT)	426 psi (29.4 bar)	14	up to 24 OCC
HRB TWO RAMS (SOLID WASTE)									
	HRB 1445W-200T	2x100 hp (2x75 kw)	52"x110" (1321x2794 mm)	45"x43"x60" (1143x1092x1524 mm)	16" bore (406 mm)	452 tons (410 MT)	416 psi (28.7 bar)	15	up to 42 MSW
	HRB 1445W-300T	2x150 hp (2x112 kw)	52"x110" (1321x2794 mm)	45"x43"x60" (1143x1092x1524 mm)	16" bore (406 mm)	452 tons (410 MT)	416 psi (28.7 bar)	13	up to 61 MSW
	HRB 1545W-300T	2x150 hp (2x112 kw)	57"x110" (1448x2794 mm)	58"x44"x65" (1473x1118x1651 mm)	16" bore (406 mm)	452 tons (410 MT)	372 psi (25.6 bar)	13	up to 81 MSW

* Cylinder Size is equal to the bore diameter.

* Tons of force (in extension) is equal to the system pressure multiplied by the area of the piston head.

* The Ram Face Pressure is equal to the pounds of force divided by the area of the ram face.

* The Cycle time is equal to the time it takes to extend and retract the gatherer under no load at full speed.

* TPH is equal to the maximum throughput of the machine using a particular material at it's max density.

**Specifications subject to change without notice