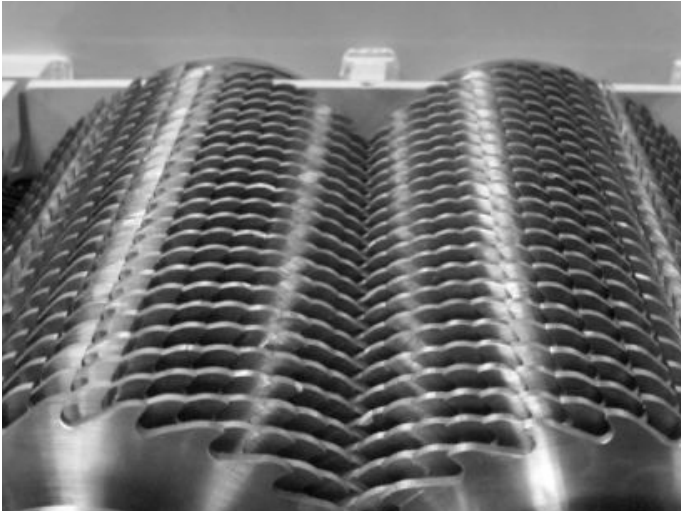


DUAL-SHEAR[®] by **SSI**



TWO-SHAFT SHREDDER

DUAL-SHEAR®



Dual-Shear® cutting chamber



Strip particle sizing - output from a Dual-Shear®

SHREDDERS FOR ALL APPLICATIONS

SSI's Dual-Shear® line of two-shaft shredders are commonly employed in volume reduction, product destruction or primary shredding applications. These low-speed, high-torque industrial shredders are ideal for processing compressible materials such as rubber, metals and many plastics that need to be "cut" in order to be sized reduced. Dual-Shear® shredders are very versatile machines that can be configured to process a wide range of materials.

WHY DUAL-SHEAR®?

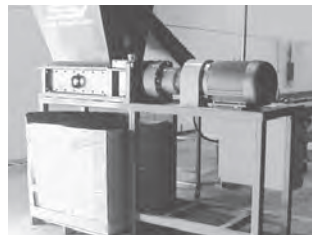
- Robust, high-torque shearing technology designed to process tough, compressible materials such as metals, carpet, tires, etc.
- Low-speed benefits—low noise, low dust, low heat generation, low operation and maintenance costs
- Heavy-duty construction
- Low horsepower, energy efficient
- Wear-resistant cutters
- Patented SSP™ - Severe Shock Protection
- Minimum foundation requirements
- Bulk feed capability
- Minimal "fines" generation

MODELS



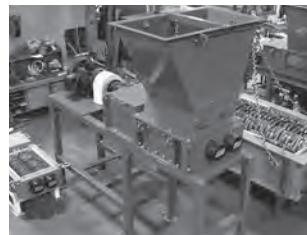
M45

Cutting chamber (W x L)	19" x 19" (485mm x 485mm)
Hopper opening (W x L)	26" x 26" (660mm x 660mm)
HP Range	7.5 (5.6kW)
Cutter thickness	1/2 - 1" (12-25mm)



M55

Cutting chamber (W x L)	23" x 30" (580mm x 760mm)
Hopper opening (W x L)	42" x 51" (1055mm x 1290mm)
HP Range	30 - 40 (23-30kW)
Cutter thickness	3/4 - 2" (19-50mm)



M70

Cutting chamber (W x L)	29" x 40" (725mm x 1015mm)
Hopper opening (W x L)	55" x 67" (1400mm x 1700mm)
HP Range	60 - 75 (45-56kW)
Cutter thickness	1 - 2.5" (25-63mm)

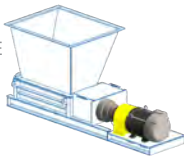


M85

Cutting chamber (W x L)	35" x 52" (890mm x 1320mm)
Hopper opening (W x L)	59" x 67" (1500mm x 1708mm)
HP range	100 - 200 (75-149kW)
Cutter thickness	1.5 - 3" (38-76mm)

DIRECT DRIVE 1

PLANETARY GEAR BOXES ARE SPLINED DIRECTLY INTO THE DRIVE SHAFT, AMPLIFYING TORQUE AND ALLOWING GREATER FLEXIBILITY OF APPLICATIONS.



DRIVE CONFIGURATIONS 2

ELECTRIC, HYDRAULIC AND SMARTDRIVE® OPTIONS AVAILABLE TO SUIT SPECIFIC NEEDS



PATENTED SSP™ 3

SEVERE SHOCK PROTECTION SYSTEM PROTECTS DRIVE SYSTEM IN AN EVENT THAT STOPS SHAFTS SUDDENLY (ELECTRIC MACHINES ONLY)



CLEANING FINGERS 4

KEEPS SHREDDED MATERIAL FROM BUILDING BETWEEN CUTTERS



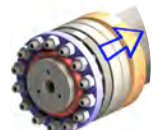
HOPPERS 5

APPLICATION-SPECIFIC FEED HOPPERS AVAILABLE, INCLUDING PATENTED RAM ASSIST



PIERCE-POINT CUTTERS 6

PULL MATERIAL INTO THE CENTER & CUT IT INTO "STRIPS" APPROXIMATELY THE SAME WIDTH AS THE CUTTERS



PATENTED ACLS™ 7

ADVANCED CUTTER LOCKING SYSTEM MINIMIZES MAINTENANCE & PROLONGS CUTTER LIFE



SEAL & BEARING PROTECTION 8

COMBINATION OF CONVENTIONAL & LABYRINTH SEALS TO PREVENT CONTAMINATION



M100

Cutting chamber (W x L)	41" x 63" (1065mm x 1600mm)
Hopper opening (W x L)	62" x 88" (1579mm x 2225mm)
HP range	200 (149kW)
Cutter thickness	1.5 - 3" (38-76mm)



M120

Cutting chamber (W x L)	46" x 63" (1168mm x 1600mm)
Hopper opening (W x L)	65" x 75" (1650mm x 1905mm)
HP range	250 - 400 (186-300kW)
Cutter thickness	1.5 - 3" (38-76mm)



M140

Cutting chamber (W x L)	52" x 75" (1320mm x 1900mm)
Hopper opening (W x L)	69" x 96" (1755mm x 2440mm)
HP range	400 (298kW)
Cutter thickness	1.5 - 3" (38-76mm)



M160

Cutting chamber (W x L)	64" x 75" (1625mm x 1900mm)
Hopper opening (W x L)	96" x 144" (2440mm x 3660mm)
HP range	500 (372kW)
Cutter thickness	2 - 3" (50-76mm)

WHAT NEEDS SHREDDING?®

The SSI Dual-Shear® is a powerful low-speed, high-torque shredder capable of shredding mixed materials with heavy metal contamination. SSI incorporates years of experience and refined components to create a two-shaft shredder capable of shredding difficult material with minimal wear to the machine. Dual-Shear® are employed in applications ranging from alternative fuels to hazardous waste.

