

CK101



STRENGTH IN WASTE

100KG BALES

CK101 is designed for clients with small amounts of waste.

The minimum floor space and the single phase power supply makes it very easy to install and to use.

CK101 is equipped with a mechanical ejection system and is a low cost waste handling solution to companies looking to compact their cardboard and other plastic wastes.

The good size feed opening allows to load bulkier materials and the easy tying system with 2 rolls of cord will make a great bale of 100kg.

BALER DIMENSIONS

Height	2410mm
Width	940mm
Depth	920mm
Weight	440kg
Feed Opening (H x W)	710mm x 815mm

BALER PERFORMANCE

Compaction Force	5 tonnes
Cycle Time	45 seconds
Power Supply	1 x 230V, 50Hz
Motor	1.1kW
Noise Level	60dBA

BALE DIMENSIONS

Height	600mm
Width	695mm
Depth	510mm
Bale Weight Cardboard (approx)	80-100kg
Bale Weight Plastic (approx)	90-110kg

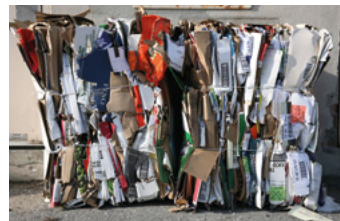
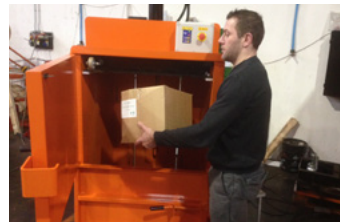
CK101W

2 x Rolls of tying cord	9mm
Bale Ejection System	Mechanical

CK International reserves the right to alter specification without prior notice. Bale weights given are guidelines only, actual bale weights depend on operator and material baled.

BENEFITS

- _ Compact design
- _ Automatic return stroke
- _ Mechanical bale ejection
- _ Single phase, easy to install and to use
- _ Easy to use controls.



CK101 complies with EN16500 – European Standards for vertical balers.



CK International Ltd.
38a Eglish Road
Dungannon
Co. Tyrone
Northern Ireland
BT70 1LA

T: +44 (0) 28 8775 3966
F: +44 (0) 28 8772 5528
info@ckinternational.co.uk
www.ckinternational.co.uk