



# TWO-RAM BALER

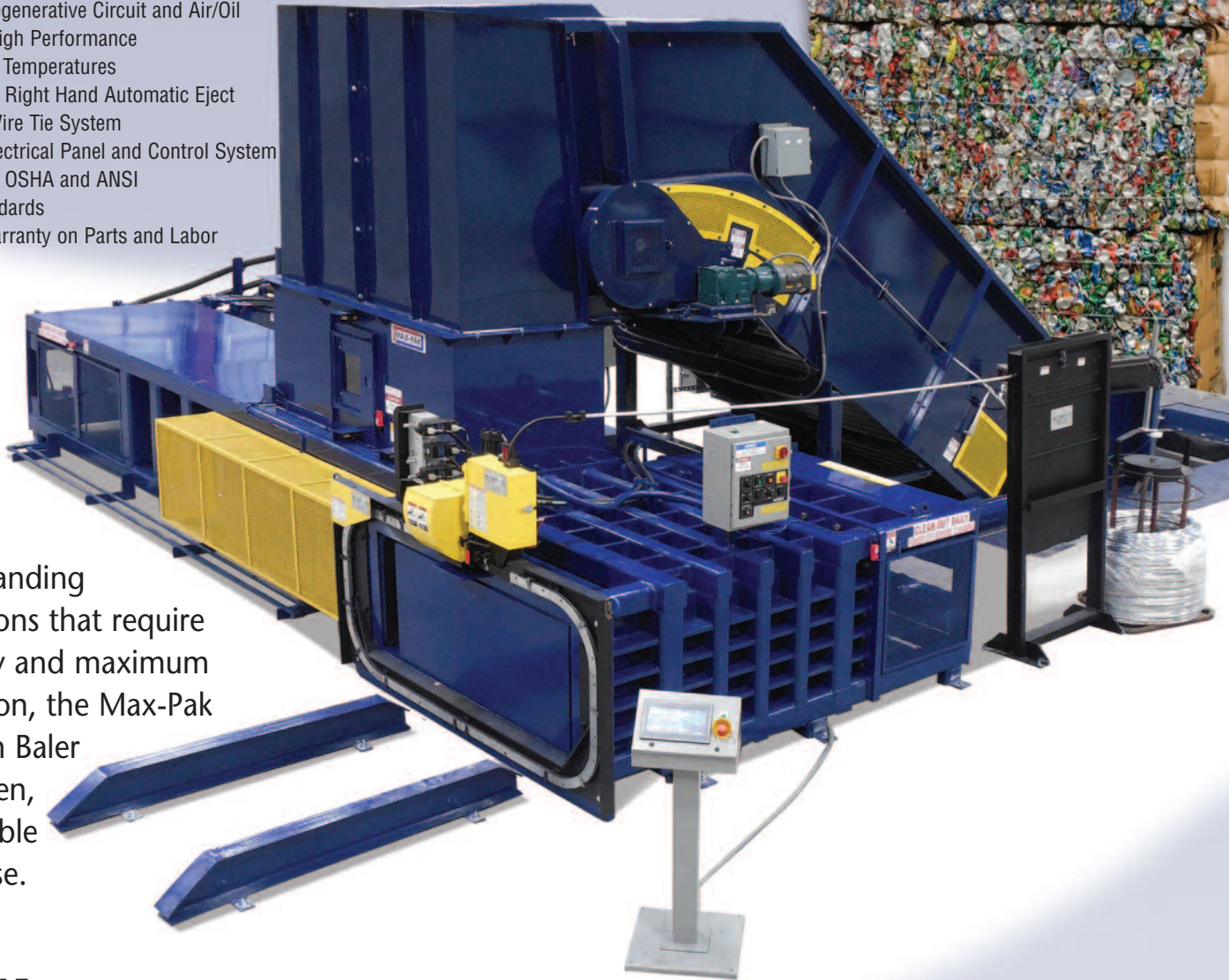


***More Power.  
More Confidence.***

# Two-Ram Productivity and Reliability Without Compromise.

## Two-Ram Baler Standard Features

- Heavy Wall Tubular Steel Frame
- AR 400 Floor and Platen
- 350 - 600 Gallon Oil Reservoir (depending on model)
- Hydraulic Regenerative Circuit and Air/Oil Cooler for High Performance at Lower Oil Temperatures
- Left Hand or Right Hand Automatic Eject
- Automatic Wire Tie System
- NEMA 12 Electrical Panel and Control System
- Conforms to OSHA and ANSI Z245.5 Standards
- One Year Warranty on Parts and Labor



For demanding applications that require versatility and maximum production, the Max-Pak Two-Ram Baler is a proven, dependable workhorse.

**VERSATILE** – Do you bale a variety of materials and do it continuously? The Max-Pak Two-Ram can switch from OCC to shredded paper, to aluminum cans, to P.E.T. and back to OCC without missing a beat...delivering uniform and dense transportable bales.

**RELIABLE** – Best of all, like all Max-Pak balers, the Two-Ram will do its job day after day, for years to come. Max-Pak has been producing quality balers since 1976, establishing a benchmark of performance and reliability unrivaled in the industry. In fact, OVER 90% OF ALL MAX-PAK BALERS EVER BUILT ARE STILL ON THE JOB.

**QUALITY CONSTRUCTION** – Max-Pak will outlast other balers because we use tubular steel for structural integrity, and heavy gauge abrasion resistant steel for high stress areas like the packing platen, floor, and side walls. Main cylinders are trunnion mounted for extra strength and protection. We build in design features for longevity, with electrical and hydraulic systems that go well beyond their expected demands. Electrical systems meet high standards, with UL Listed control panels and TEFC motors. Hydraulic system components in the Two-Ram Baler are engineered to withstand 5,000 psi, so they'll run cooler at the machine's peak demand of 3,000 psi. Cooler hydraulic systems perform better and last longer.



## MAX-PAK TWO-RAM BALER SPECIFICATIONS

MODEL	MP2R4360-508	MP2R4360-509	MP2R4360-759	MP2R4380-509	MP2R4380-759	MP2R4380-7510	MP2R4380-10010	MP2R6080-7511	MP2R6080-10011
<b>BALE SPECS / PERFORMANCE (1)</b>									
Feed Opening	43" x 60"	43" x 60"	43" x 60"	43" x 80"	43" x 80"	43" x 80"	43" x 80"	60" x 80"	60" x 80"
Bale Size	30" x 45" x 60"	30" x 45" x 60"	30" x 45" x 60"	30" x 45" x 60"	30" x 45" x 60"	30" x 45" x 60"	30" x 45" x 60"	30" x 48" x 60"	30" x 48" x 60"
Bale Volume (Cubic Feet)	46.875 ft <sup>3</sup>	46.875 ft <sup>3</sup>	46.875 ft <sup>3</sup>	46.875 ft <sup>3</sup>	46.875 ft <sup>3</sup>	46.875 ft <sup>3</sup>	46.875 ft <sup>3</sup>	50 ft <sup>3</sup>	50 ft <sup>3</sup>
Cycle Time (No Load - Gathering Cycle Only)	15.61 Sec.	19.76 Sec.	11.65 Sec.	22.45 Sec.	13.24 Sec.	16.35 Sec.	13.86 Sec.	18.67 Sec.	15.83 Sec.
Capacity (Cubic Feet Per Hour, No Load)	9,640 ft <sup>3</sup> /hr	7,617 ft <sup>3</sup> /hr	12,158 ft <sup>3</sup> /hr	8,938 ft <sup>3</sup> /hr	15,156 ft <sup>3</sup> /hr	12,276 ft <sup>3</sup> /hr	14,479 ft <sup>3</sup> /hr	14,996 ft <sup>3</sup> /hr	16,688 ft <sup>3</sup> /hr
<b>MATERIALS</b>									
<b>Bulk OCC</b>									
Bale Weight	Up to 1250 lbs.	Up to 1300 lbs.	Up to 1300 lbs.	Up to 1300 lbs.	Up to 1300 lbs.	Up to 1400 lbs.	Up to 1400 lbs.	Up to 1950 lbs.	Up to 1950 lbs.
Density lbs./ft <sup>3</sup> Loose/Baled	2.5/28	2.5/29	2.5/29	2.5/31	2.5/31	2.5/31	2.5/31	2.5/31	2.5/31
Tons Per Hour (2)	Up to 6 tons/hr	Up to 5 tons/hr	Up to 7.5 tons/hr	Up to 5 tons/hr	Up to 9 tons/hr	Up to 7.5 tons/hr	Up to 6 tons/hr	Up to 9 tons/hr	Up to 10 tons/hr
<b>News and OM</b>									
Bale Weight	Up to 1350 lbs.	Up to 1400 lbs.	Up to 1400 lbs.	Up to 1400 lbs.	Up to 1400 lbs.	Up to 1500 lbs.	Up to 1500 lbs.	Up to 2000 lbs.	Up to 2000 lbs.
Density lbs./ft <sup>3</sup> Loose/Baled	4/30	4/30	4/30	4/32	4/32	4/32	4/32	4/32	4/32
Tons Per Hour (2)	Up to 9.5 tons/hr	Up to 8 tons/hr	Up to 12 tons/hr	Up to 7.5 tons/hr	Up to 14 tons/hr	Up to 9 tons/hr	Up to 9 tons/hr	Up to 14 tons/hr	Up to 16 tons/hr
<b>P.E.T</b>									
Bale Weight	Up to 850 lbs.	Up to 900 lbs.	Up to 900 lbs.	Up to 900 lbs.	Up to 900 lbs.	Up to 950 lbs.	Up to 950 lbs.	Up to 1200 lbs.	Up to 1200 lbs.
Density lbs./ft <sup>3</sup> Loose/Baled	1/18	1/20	1/20	1/20	1/20	1/20	1/20	1/20	1/20
Tons Per Hour (2)	Up to 4 tons/hr	Up to 3 tons/hr	Up to 3.5 tons/hr	Up to 3 tons/hr	Up to 4 tons/hr	Up to 4 tons/hr	Up to 4 tons/hr	Up to 4 tons/hr	Up to 4.5 tons/hr
<b>Aluminum Cans</b>									
Bale Weight	Up to 800 lbs.	Up to 850 lbs.	Up to 850 lbs.	Up to 850 lbs.	Up to 850 lbs.	Up to 850 lbs.	Up to 850 lbs.	Up to 1200 lbs.	Up to 1200 lbs.
Density lbs./ft <sup>3</sup> Loose/Baled	1/15	1/19	1/19	1/19	1/19	1/19	1/19	1/19	1/19
Tons Per Hour (2)	Up to 4 tons/hr	Up to 3 tons/hr	Up to 3.5 tons/hr	Up to 3 tons/hr	Up to 4 tons/hr	Up to 4 tons/hr	Up to 4 tons/hr	Up to 4 tons/hr	Up to 4.5 tons/hr
<b>HYDRAULIC COMPONENTS</b>									
Main Pump: Horsepower Limited Piston	92gpm	92gpm	156gpm	92gpm	156gpm	156gpm	184gpm	156gpm	184gpm
Main Cylinder: Bore / Stroke / Rod	8" / 110" / 5.5"	9" / 110" / 6"	9" / 110" / 6"	9" / 125" / 6"	9" / 125" / 6"	10" / 125" / 7"	10" / 125" / 7"	11" / 118" / 8"	11" / 118" / 8"
Eject Ram Cylinder: Bore / Stroke / Rod	8" / 72" / 5.5"	9" / 72" / 7"	9" / 72" / 7"	9" / 72" / 7"	9" / 72" / 7"	9" / 72" / 7"	9" / 72" / 7"	9" / 86" / 7"	9" / 86" / 7"
Bale Separation Door Cyl: Bore / Stroke / Rod	7" / 66" / 4.5"	7" / 66" / 4.5"	7" / 66" / 4.5"	7" / 66" / 4.5"	7" / 66" / 4.5"	7" / 66" / 4.5"	7" / 66" / 4.5"	7" / 66" / 4.5"	7" / 66" / 4.5"
System Pressure	3,000 psi	3,000 psi	3,000 psi	3,000 psi	3,000 psi	3,000 psi	3,000 psi	3,000 psi	3,000 psi
Ram Face Pressure	121.8 psi	154.17 psi	154.2 psi	154.2 psi	154.2 psi	190.3 psi	190.3 psi	166.8 psi	166.8 psi
Overall Platen Force	143,256 lbs.	181,309 lbs.	181,309 lbs.	181,309 lbs.	181,309 lbs.	222,839 lbs.	222,839 lbs.	270,845 lbs.	270,845 lbs.
Oil Reservoir	350 Gallons	350 Gallons	500 Gallons	350 Gallons	500 Gallons	500 Gallons	550 Gallons	550 Gallons	600 Gallons
Main Hydraulic Manifold (All Models)	Regenerative Circuit, Integral Relief, Ductile Iron								
Oil Cooling (All Models)	Independent Cooling / Filtration Loop								
Filtration (All Models)	5 Micron Absolute								
<b>ELECTRICAL COMPONENTS</b>									
Main Motor	50hp	50hp	75hp	75hp	75hp	75hp	100hp	75hp	100hp
(TEFC, Premium Efficiency)	230/460v - 3ph	230/460v - 3ph	230/460v - 3ph	230/460v - 3ph	230/460v - 3ph	230/460v - 3ph	230/460v - 3ph	230/460v - 3ph	230/460v - 3ph
Controls (All Models)	Allen Bradley Micrologix 1400 PLC-Onboard Ethernet, UL & CUL Listed, Color Touch Screen Interface, Standard Across-The-Line Starting								
<b>STRUCTURAL</b>									
Frame (All Models)	Heavy Channel and Tube Steel Construction								
Floor & Platen	Replaceable AR400 Alloy Steel Wear Surfaces								
Subfloor	Heavy Wall Tube Steel in Honey-Comb Design for Superior Strength								
Shipping Weight	59,000 lbs.	69,000 lbs.	69,000 lbs.	71,000 lbs.	71,000 lbs.	71,000 lbs.	72,000 lbs.	72,000 lbs.	74,000 lbs.
<b>OPTIONAL EQUIPMENT &amp; FEATURES</b>									
Reduced Amperage Starting, Remote Power Unit and/or Operator Station, Automatic Plastic Strapper, Ultrasonic or High Intensity Actuators, Diagnostic Modern, Flame Retardent Hydraulic Oil, Feed Hopper Extension, Upper Photo-Eyes, Custom Paint, Conveyor and/or Conveyor Controls (Variable Speed Available)									
NOTES: (1) Performance Rates, Bale Weights and Densities are subject to variables such as moisture content, loose densities, feed rates, and other variables associated with the process of baling									
(2) Assuming 65% labor efficiency and wire tying									

**FACTORY INSTALLATION AVAILABLE** – At Max-Pak, we take a personal interest in every machine we sell and every customer we serve. Maybe that comes from our small town heritage. It's who we are. So it makes sense that we deliver and install every baler ourselves. As part of this optional service, our factory technicians will even train your operators before we leave the installation. We want you to be a friend and a Max-Pak customer for a long time, so we're not satisfied until you're satisfied.

**SERVICE & SUPPORT** – We also know that time is money and downtime takes a toll on your bottom line. Toll-Free telephone support is available 24/7, and over 300 qualified service centers are standing by in the unlikely event you ever have a problem with your Max-Pak baler. A full line of replacement parts are available direct from our factory, and trained technicians and service trucks can be dispatched quickly to your location if the need arises.



The Two-Ram Baler will deliver the performance you need,  
with the quiet confidence of Max-Pak Reliability.

# The Max-Pak Difference

Since 1976, Max-Pak has been making quality balers and compactors for the waste industry. It was something we had to do. You see, we're also in the waste paper recycling business, and 30 years ago we couldn't find a baler that performed the way we needed. So we built our own.

Being in the waste business has its advantages when you're designing a baler. Not only do we understand the challenges and demands expected from a baler, we get to test and fine tune our ideas in a real working environment – our own.

For our other baler customers, it means they get the benefit of our front-line experience and our determination to only build the best. A Max-Pak baler is not good enough for our customers unless it's good enough for us.

At Max-Pak we take a personal interest in every machine we sell, and every customer we serve. It comes from our small town heritage. It's who we are. So it also makes sense that we deliver and install every baler ourselves, and then train your operators before we leave. We want you to be a friend and a Max-Pak customer for a long time. That's part of our small town, small company mentality.

But make no mistake. Max-Pak is no lightweight when it comes to balers. You'll find our equipment in some of the most demanding industries, with some of the most particular companies.

Our customers have come to know and trust Max-Pak for productivity, reliability, and integrity. So it's no surprise that over 90% of all Max-Pak balers ever built are still on the job. And we plan to keep it that way.

## Max-Pak Offers A Full Line of Baling and Recycling Equipment

Call Us For More Information, or to Locate Your Nearest Dealer.



*Foam Balers*



*Horizontal Closed End Balers*



*Horizontal Open End Balers*



*Compactors*



*Full Eject Balers*



*Answer Two-Ram Baler*



*Full Eject Stamper Baler*



*Vertical Balers*



**Waste Processing Equipment, Inc.**

260 Dilbeck Road / P.O. Box 1047  
Rainsville, AL 35986

Toll Free: 800-225-6458 • Fax: 256-638-8979 • Web Site: [www.maxpakbalers.com](http://www.maxpakbalers.com)  
Email Sales: [sales@maxpakbalers.com](mailto:sales@maxpakbalers.com) • Email Service: [service@maxpakbalers.com](mailto:service@maxpakbalers.com)

