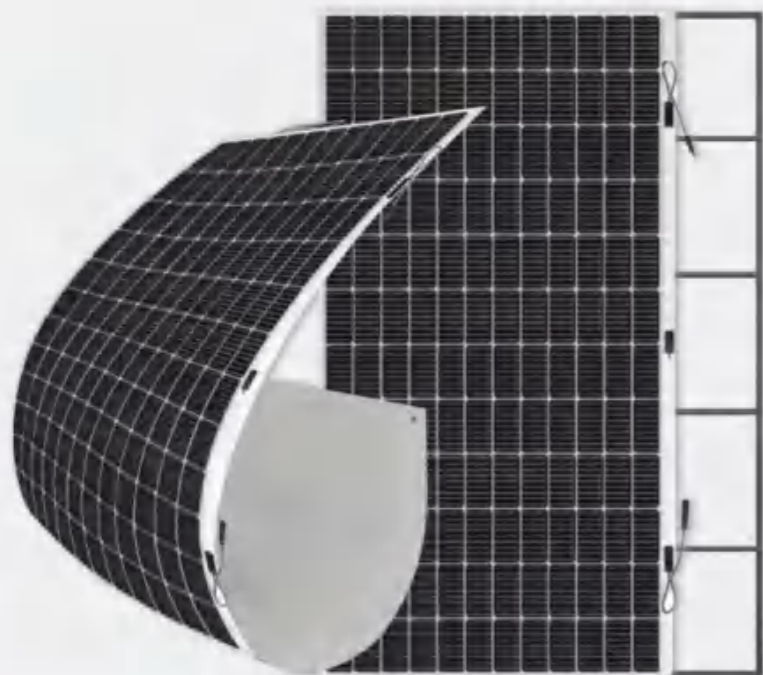


SOLAR Module

SHFM-430-T2 / Semi Flexible Modules



Optional bracket

N-TOPCON

Conversion Efficiency
20.73%

Weight
2.7kg/m²

Quality Assurance

Product warranty **12** years
Power warranty **25** years

Recommended for adaptation to low load industrial, commercial, and household distributed systems. Recommended for Truck roof solar systems.

ELECTRICAL PROPERTY PARAMETER

ELECTRICAL PROJECT		PARAMETERS			
Maximum power	Pmax(W)	410	420	430	440
Optimum operating voltage	Vmp(V)	32.03	32.38	32.76	33.12
Optimum operating current	Imp(A)	12.81	12.98	13.13	13.29
Open-circuit voltage	Voc(V)	39.24	39.42	39.58	39.74
Short-circuit current	Isc(A)	13.54	13.69	13.84	13.98
Module operating temperature range	°C	-40°C~+85°C			
Maximum system voltage	V(IEC)	DC1000/1500			
Maximum fuse current	A	25			
Power tolerance range	%	0~+3%			

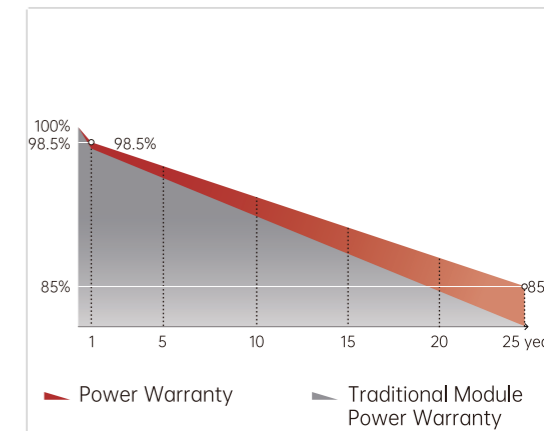
*STC(Standard test circumstance): Frontal Irradiance 1000W/m², Cell temperature 25°C, Spectrum AM1.5.

TEMPERATURE COEFFICIENT

Rated operating temperature of the cell	VOCT	°C	44°C±2°C
Maximum power temperature coefficient	Pmax	%/°C	-0.26
Open-circuit voltage temperature coefficient	Voc	%/°C	-0.24
Short-circuit current temperature coefficient	Isc	%/°C	0.04

MECHANICAL PARAMETER

Cell type	TOPCon cell 182×91mm			
Cell arrangement	108 pcs (9×12)			
Module size	2260x918x2.7mm			
Module weight	5.6kg			
Junction box	Enclosure rating IP68			
Output cable	4mm ² ,500mm cable net length. Cable length can be customized			
Connector type	MC4 compatibility			
Frame	N/A			
Front static load (snow pressure)	5400Pa			
Rear static load (wind pressure)	2400Pa			



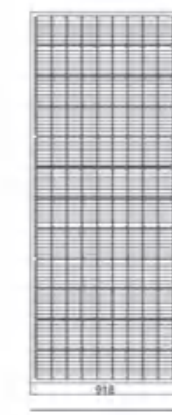
SAFETY LEVEL & WARRANTY

Safety level	Class II
Product warranty	12 years of product materials and technology
Power warranty	25 years linear power output

*The attenuation in the first year is less than 1.5%. From the following year, the annual decline is less than 0.4%. The module power is no less than 85% in the 25th year.

PACKING DETAILS

Transportation	Platform Lorry	Platform Lorry	Container	Container
Size	13m	17.5m	20°C	40°C
Pallet	22	30	8	20
Piece/Pallet	70	70	70	70
Total pieces	1540	2100	560	1400
Packaging size (Pallet)	2320*1110*1100mm			



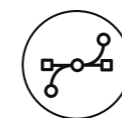
COMPREHENSIVE PRODUCT CERTIFICATION AND QUALITY MANAGEMENT SYSTEM



PRODUCT FEATURE



High reliability in harsh environment testing



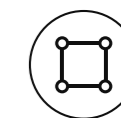
High flexibility fit all kinds of roofing



The lack of scaffolds cuts labor and reduces costs



Customizable dimensions save transportation costs



Realize mobile energy through various uses